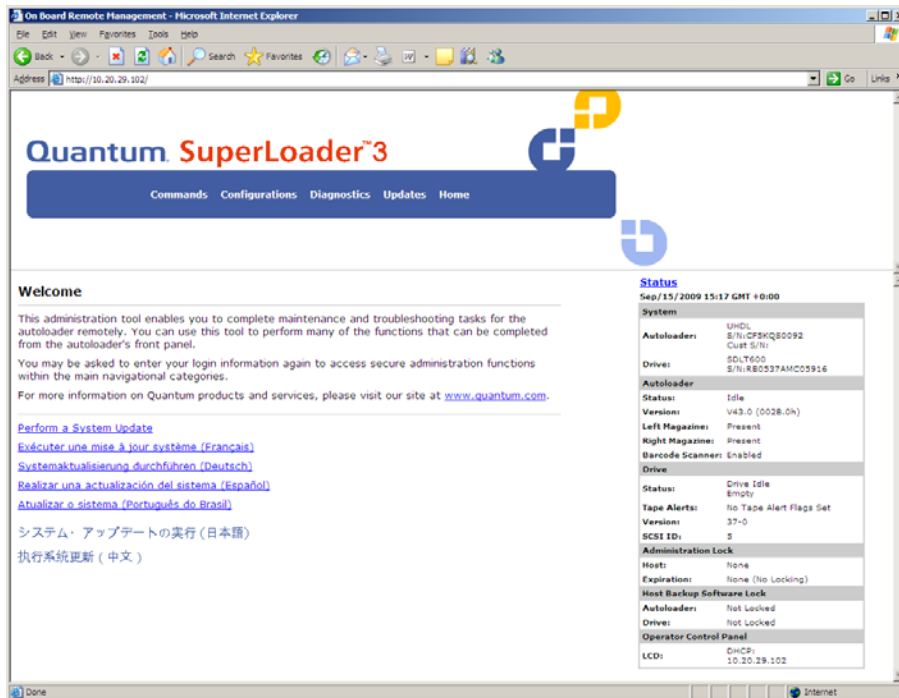


Capturing Logs for a SuperLoader 3

Open the library's Web interface and log in.

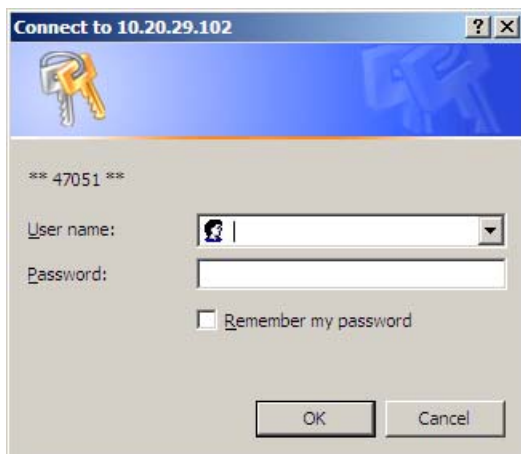
The following screen appears:



Select the **Diagnostics** link near the top of the page. Then you will be prompted to enter your username and password.

The default login is:


- User name: **guest**
- Password: **guest**



Once logged in, click **Diagnostics** at the top of the page to display the following page:

The screenshot shows a web browser window displaying the Quantum SuperLoader 3 web interface. The browser's address bar shows 'http://10.20.29.102/'. The page has a navigation bar with links: Commands, Configurations, Diagnostics (selected), Updates, and Home. The main content area is titled 'Diagnostics' and includes instructions for running loader diagnostic tests. It features a 'Test' dropdown menu set to 'select one', a 'Count' input field with the value '1', and 'Start Test' and 'Stop Test' buttons. Below this is a 'View Diagnostic Test Progress' section with a 'View Status' button. The 'View Error and History Logs' section includes instructions and buttons for 'View Logs', 'TapeAlertLogs', and 'Save Logs'. The 'Identification' section has a 'Time (secs)' input field set to '30' and an 'Identify' button. The 'Autoloader Reset' section provides instructions and an 'Autoloader Reset' button. On the right side, there is a 'Status' panel showing system information as of 'Sep/15/2009 15:19 GMT +0:00'. The status panel includes sections for System (UHDL, S/N: CF5KQ50092, Cust S/N:), Drive (SDLT600, S/N: RB0537AMC05916), Autoloader (Status: Idle, Version: V43.0 (002B.0h), Left Magazine: Present, Right Magazine: Present, Barcode Scanner: Enabled), Drive (Status: Drive Idle Empty, Tape Alerts: No Tape Alert Flags Set, Version: 37-0, SCSI ID: 5), Administration Lock (Host: None, Expiration: None (No Locking)), Host Backup Software Lock (Autoloader: Not Locked, Drive: Not Locked), and Operator Control Panel (LCD: Drive, Ethernet).

Click the **Save Logs** button under the heading *View Error and History Logs*. You will receive a prompt to either save or open the file. Save the file and then have the customer email you the logs.

 **Note:** If a message appears that the security settings will not allow the logs to be saved, please add the IP address of the superloader to Trusted Sites in your Web browser. Then a log will be saved called **loader.txt**.

If the SuperLoader is not on the network, attach an Ethernet patch cable to the Ethernet port on the back of the unit.

To set a dynamic IP address:

- 1 From the main menu, scroll to **Configuration**, and then press **Enter**.
- 2 From the **Configuration** menu, scroll to **Ethernet**, and then press **Enter**.
- 3 From the **Ethernet** submenu, scroll to **Set IP**, and then press **Enter**.
- 4 Scroll to **DHCP**, and then press **Enter**. *Please reboot to use DHCP* displays on the LCD screen.
- 5 Press and hold the power button on the front panel until *System Shutdown wait 60 sec* displays on the LCD. **Power Off** displays on the LCD, then the autoloader shuts off.
- 6 Press the power button again to power on the autoloader. The IP address is changed.

To set a static IP address:

- 1 From the main menu, scroll to **Configuration**, and then press **Enter**.
- 2 From the **Configuration** menu, scroll to **Ethernet**, and then press **Enter**.
- 3 From the **Ethernet** submenu, scroll to **Set IP**, and then press **Enter**.
- 4 Scroll to **Static IP**, and then press **Enter**. The cursor automatically displays at the first digit.
- 5 At each position of the IP address, use the up and down arrows to change the value of each digit. Press **Enter** to advance the cursor to the next digit. When you have advanced through all of the digits of the IP address, the autoloader displays *Enter to save*.
- 6 Press **Enter**. The **Configuration** submenu displays and the static IP is now in effect. You do not need to reboot the autoloader.
- 7 Press **Escape** or **Enter** to return to the Ethernet submenu.

To set a subnet mask:

- 1 From the main menu, scroll to **Configuration**, and then press **Enter**.
- 2 From the **Configuration** menu, scroll to **Ethernet**, and then press **Enter**.
- 3 From the **Ethernet** submenu, scroll to **Set Subnet Mask**, and then press **Enter**.
- 4 At each position of the Subnet Mask address, use the up and down arrows to change the value of each digit. Press **Enter** to advance the cursor to the next digit.
When you have advanced through all of the digits of the subnet mask address, the autoloader displays *Enter to save*.
- 5 Press **Enter**. *New Subnet Mask xxx.xxx.xxx.xxx* displays on the LCD. You do not need to reboot the autoloader.
- 6 Press **Escape** or **Enter** to return to the Ethernet submenu.

To set the IP Gateway:

- 1 From the main menu, scroll to **Configuration**, and then press **Enter**.
- 2 From the **Configuration** menu, scroll to **Ethernet**, and then press **Enter**.
- 3 From the **Ethernet** submenu, scroll to **Set Gateway**, and then press **Enter**. The cursor automatically displays at the first digit.
- 4 At each position of the gateway address, use the up and down arrows to change the value of each digit. Press **Enter** to advance the cursor to the next digit. When you have advanced through all of the digits of the gateway address, the autoloader displays **Enter to save**.
- 5 Press **Enter**. *New Gateway is xxx.xxx.xxx.xxx* displays on the LCD. You do not need to reboot the autoloader.
- 6 Press **Escape** or **Enter** to return to the **Ethernet** submenu.