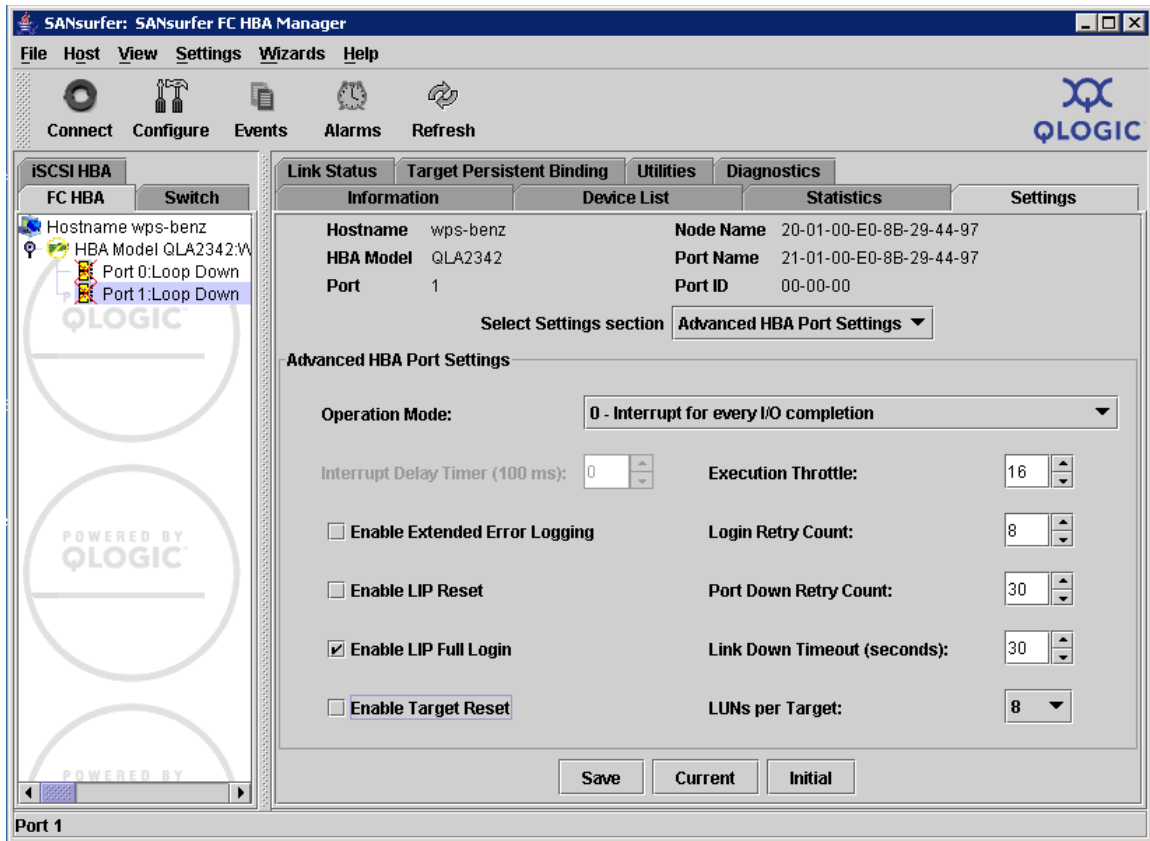


## Target Reset and Fiber Channel Tape Support on Qlogic HBAs

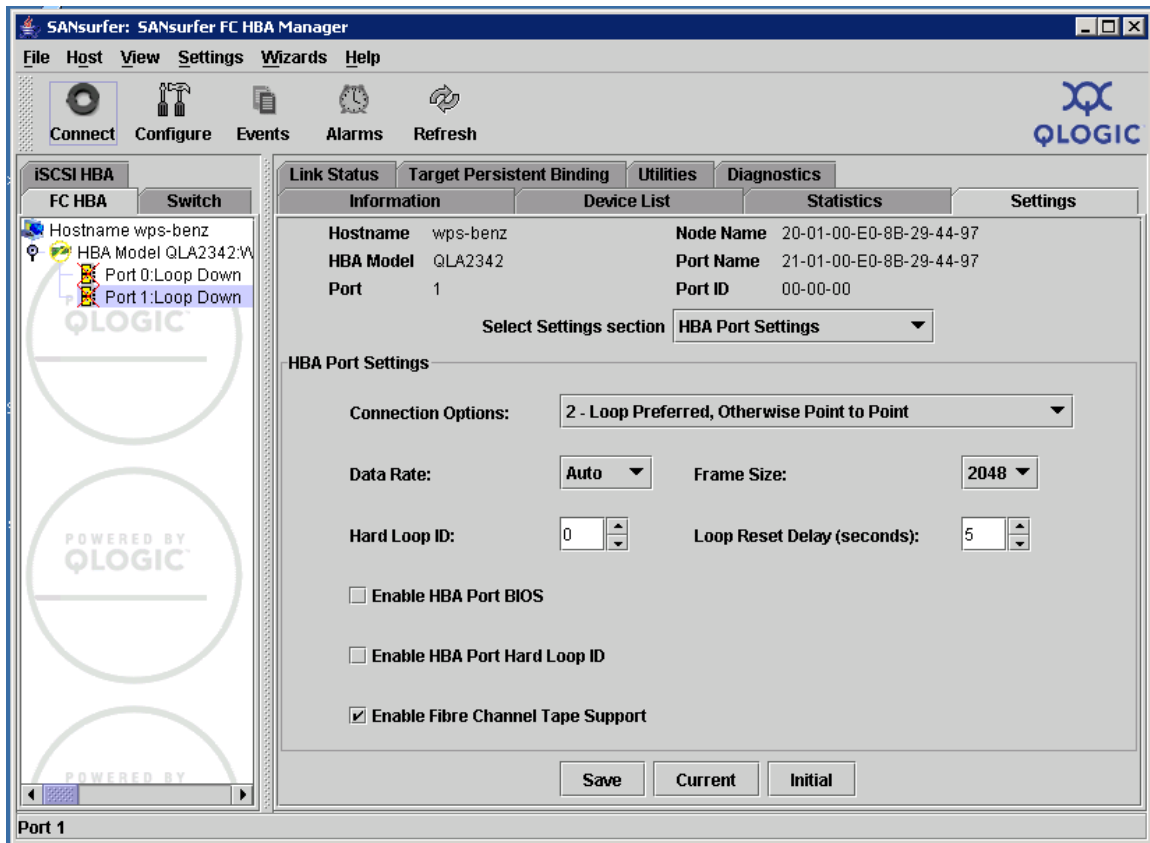
The **Enable SCSI Bus Target Reset** parameter is enabled by default on all Fiber channel HBAs. The parameter exists for disk arrays, but poses a problem for tape drives.

**PROBLEM:** When the SCSI bus target (the tape drive) is reset when a backup job is running, the backup job aborts. Since the tape drive does not receive the rewind and unload commands from the backup job, it leaves the tape in the drive, causing the drive to be seen as not ready and then be marked offline in the backup application when the next job tries to use the drive.



**SOLUTION:** To disable this parameter on a Qlogic HBA, download the **SANsurfer** utility and use this procedure.

1. Start the **SANsurfer** configuration utility.
2. Select the port on the adapter that is connected to your tape library.
3. Under the **Settings** tab, select **Advanced HBA Port Settings** for the **Select Settings** and then verify that **Enable Targe Reset** is unchecked.
4. Click **Save**.  
The utility requests a password to change the settings. The default password is **config**.



Use this procedure to verify that Fiber channel tape support is enabled.

1. Select the port on the adapter that is connected to your tape library.
2. Under the **Settings** tab, select the **HBA Port Settings** for the **Select Setting** section and then verify that **Enable Fibre Channel Tape Support** has a check mark in the setting box.
3. Reboot the server after these changes in order for them to take effect.