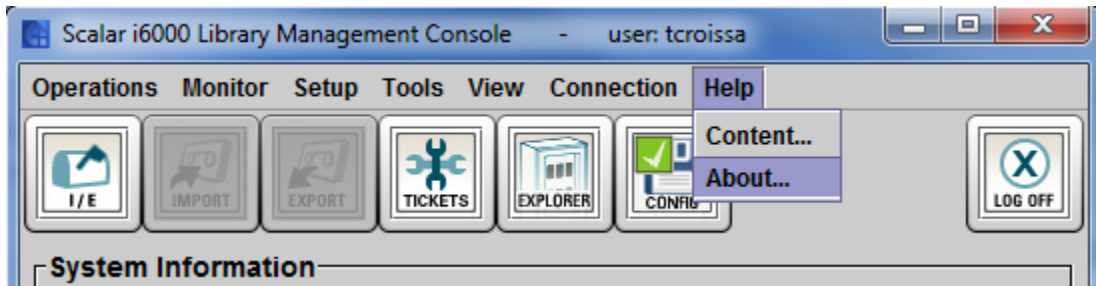


Scalar i2000 and i6000 - Determining Your Library Firmware Revision

The Scalar i2000 and its evolutionary sibling the Scalar i6000 library have a long history of operation. We are constantly improving the interface and the library's functionality so there have been many versions of firmware since the first library was released.

In order to determine your library's current revision of software you will need to log in to the library GUI, either remotely or from the front panel, and go to 'Help' on the main menu bar and then 'About'.



This will open a window in which your library firmware is displayed. The entry that determines the 'family' of your firmware revision is the 'Product Version' field, as seen below.



With the 'Product Version' please consult the chart below to obtain your firmware 'Family'.

Product Version	Firmware Family
660Q.GS22501	i11 (Requires a purchased hardware update. Does not support 2GB Fibre IO Blades or SDLT/DLT S4 tape drives)
653Q.GS00201 652Q.GS00501 650Q.GS10801 640Q.GS08801 634Q.GS00301 633Q.GS00101 632Q.GS00601 631Q.GS02201 630Q.GS20601	i10 (This revision of firmware does not support SDLT/DLT S4 drives. Please check with support to confirm hardware compatibility before requesting firmware update)

<p>617Q.GS01001 615Q.GS05501 613Q.GS02101 612Q.GS05701 611Q.GS02701 607A.GS05301 606A.GS00301 605A.GS07401 601A.GS01201 600A.GS23201</p>	<p>i8 (It is highly recommended that if you are running this family of firmware that you be updated to the latest i10 code. Please contact support for assistance)</p>
<p>596A.GS00301 595A.GS01601 590A.GS01501 575A.GS00101 571A.GS00101 560A.GS01101 540A.GS00601</p>	<p>i6 (It is very highly recommended that if you are running this family of firmware that you be updated to the latest i10 code [i8 if using SDLT/DLT S4]. Please contact support for assistance)</p>
<p>520A.GS00201 510A.GS01101 500A.GS02401</p>	<p>i5 (Please contact support to arrange a firmware update if possible. This firmware is obsolete.)</p>
<p>406A.GS00101 402A.GS00901 400A.GS02001</p>	<p>i4 (Please contact support to arrange a firmware update if possible. This firmware is obsolete.)</p>
<p>300A.GS02901</p>	<p>i3 (Please contact support to arrange a firmware update if possible. This firmware is obsolete.)</p>
<p>200A.GS01801</p>	<p>M2.1 (Please contact support to arrange a firmware update if possible. This firmware is obsolete.)</p>