

## QXS 12G QUICK START

QXS 12G systems offer intelligent real time tiering and all-flash performance at a fraction of the cost of an all-flash system. Documentation is available at the QXS 12G Documentation Center:

[www.quantum.com/QXSG2docs](http://www.quantum.com/QXSG2docs)

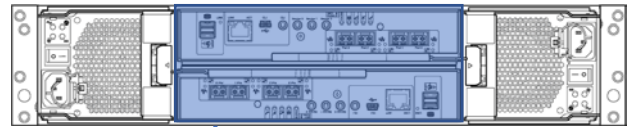
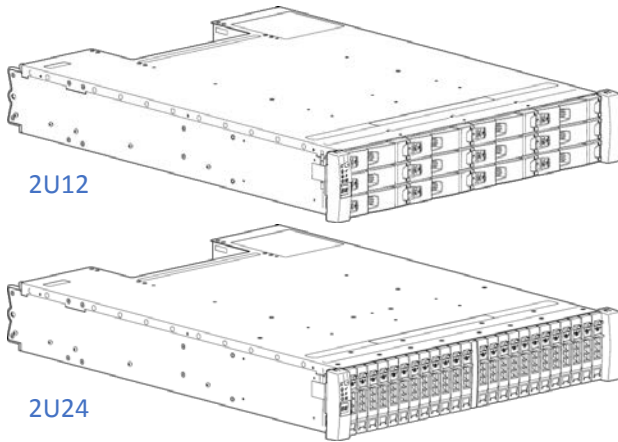
**Note:** For installations that include an Xcellis system, **DO NOT** use these instructions. Instead, refer to the Xcellis Workflow Director Gen 2 Quick Start that is shipped with the server(s).

Activate your warranty and register your product with Quantum: [www.quantum.com/startup](http://www.quantum.com/startup)

### 2U12 and 2U24 Chassis: Ship with Drives Installed

Front View

Rear View

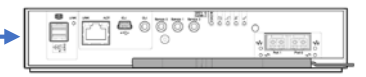


QXS-412 12G  
QXS-424 12G



4-Series Controller

QXS-312 12G  
QXS-324 12G



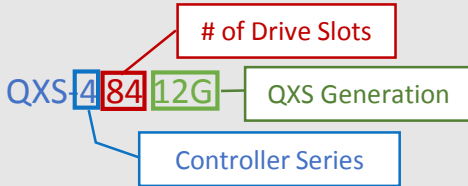
3-Series Controller

Expansion: 2U12  
2U24

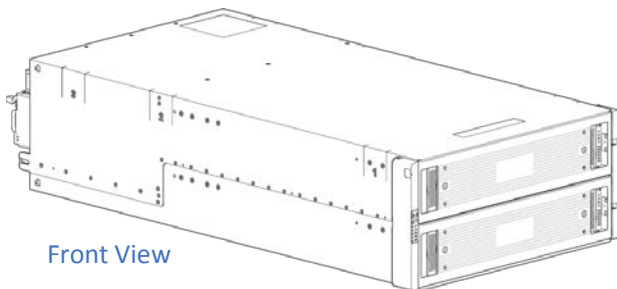


Expansion IOM

### Identify Your QXS Model...

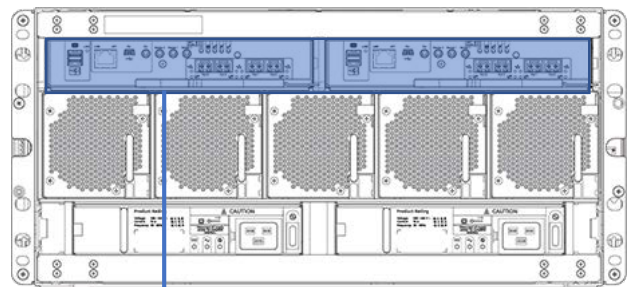


### 5U84 Chassis: Drives Ship Separately from Chassis



Front View

Rear View



QXS-484 12G



4-Series Controller

Expansion: 5U84

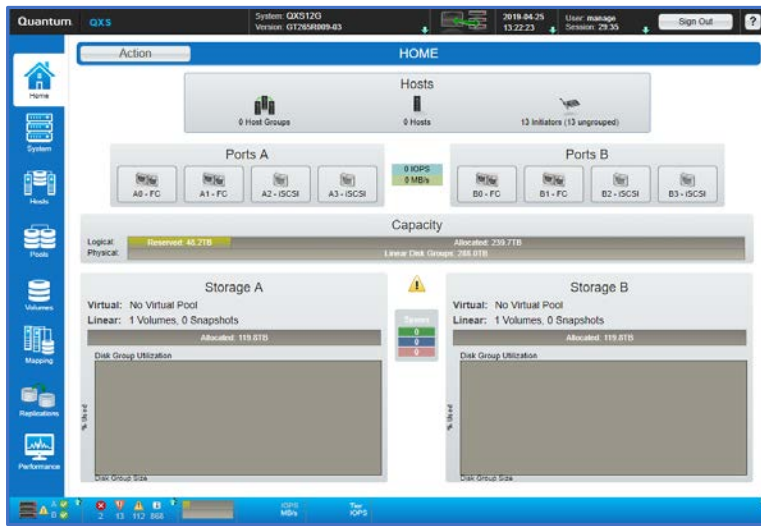


Expansion IOM

# Installing the QXS 12G System

Complete the following steps if you are installing a RAID chassis, an expansion chassis, or both.

- Step 1** Install the system in a rack, cable, and power on. Update firmware as needed. Refer to [Install > Installing 2U Chassis](#) or [Install > Installing 5U Chassis](#) on the QXS 12G Documentation Center.
- Step 2** Access the Disk Management Utility (DMU) GUI to configure your system. Refer to [Operate > Disk Management Utility User Guide](#) on the QXS 12G Documentation Center.

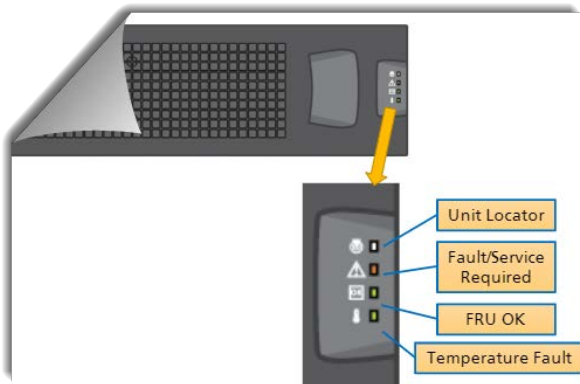


The QXS User Interface – DMU

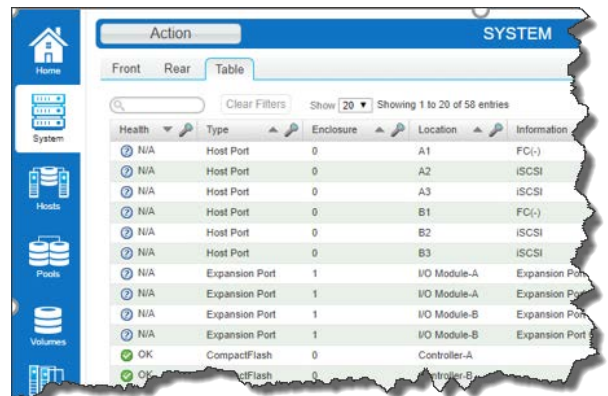
# Operating the QXS 12G System

Use the LEDs to monitor your system. Refer to [Operate > 2U Operator's \(Ops\) Panel](#) and [Operate > 5U Ops Panel](#) on the QXS 12G Documentation Center.

Use the GUI to monitor the storage. Refer to [Operate > Disk Management Utility User Guide](#) on the QXS 12G Documentation Center.



Front View



System Page in the DMU

