

MAC OS JAVA APPLET Setup Instructions

LTO-3A



6-67659-01 Rev A

The *LTO-3A MAC OS Java Applet* is a standalone utility to be installed, not an integrated component of the A-Series software.

Contents

Introduction	3
Installing the LTO-3A Java Applet	3
Modifying System Configuration	3
Mac OS x IP Settings Configuration.....	3
Configuring the LTO-3A Java Applet	5
FTP Client Settings Configuration	5

Introduction

An incompatibility between Safari for OS X and Java Standard Edition (SE) version 1.6.0 and later prevent LTO-3A drag-and-drop operation within the Safari browser. The LTO3-A Stand Alone Java Applet supports drag-and-drop operations with Java SE version 1.6.0 and later.

Installing the LTO-3A Java Applet

Download the LTO-3A MAC OS Java Applet from:

<http://www.quantum.com/ServiceandSupport/SoftwareandDocumentationDownloads/LTO-3ADrive/Index.aspx>

Modifying System Configuration

Mac OS x IP Settings Configuration

Set the IP address of the Ethernet port to which the LTO-3A is physically connected.

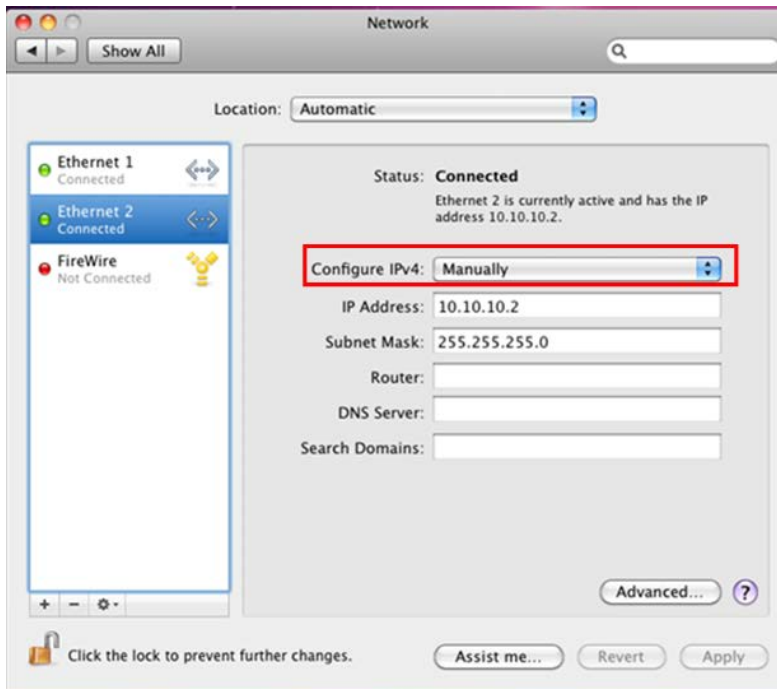
1. From the OS X Dock, select **System Preferences**.

The System Preferences window displays.



2. In the Internet & Wireless section, select **Network**.

The Network window displays.

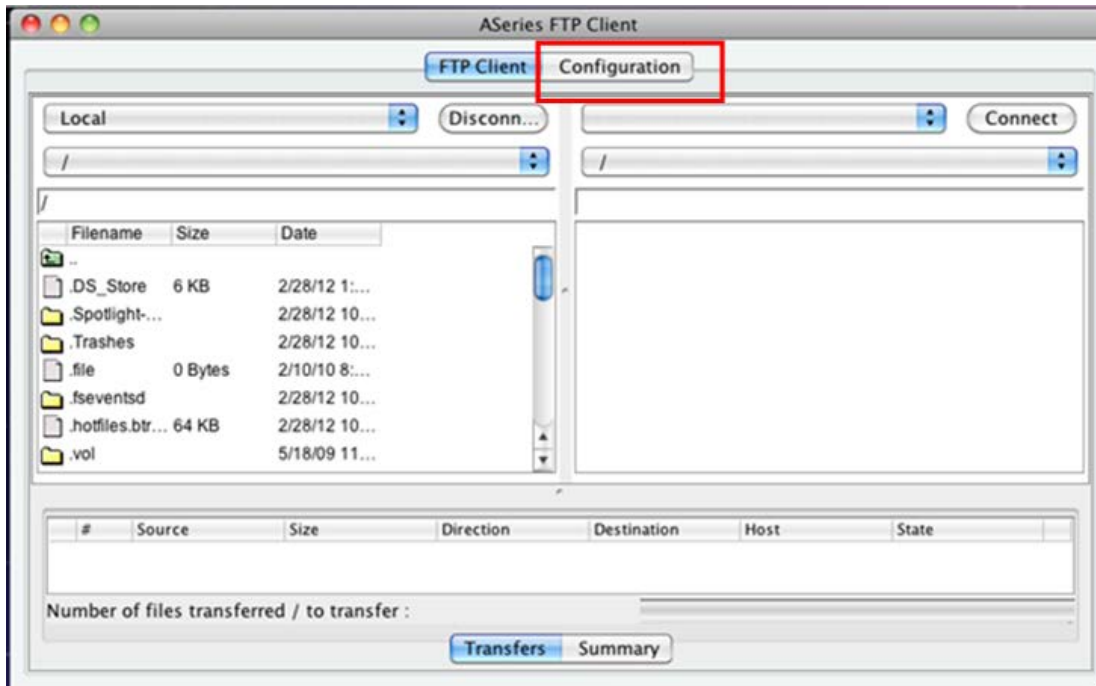


3. On the Network window, do the following:
 - a) In left panel of the window, select the Ethernet port number to which the LTO-3A unit is physically connected.
 - b) In the **Configure IPv4** field, select **Manually** from the drop down menu.
 - c) In the **IP Address** field, change the Ethernet port to the IP Address 10.10.10.2.
 - d) In the **Subnet Mask** field, change the Subnet Mask to 255.255.255.0.

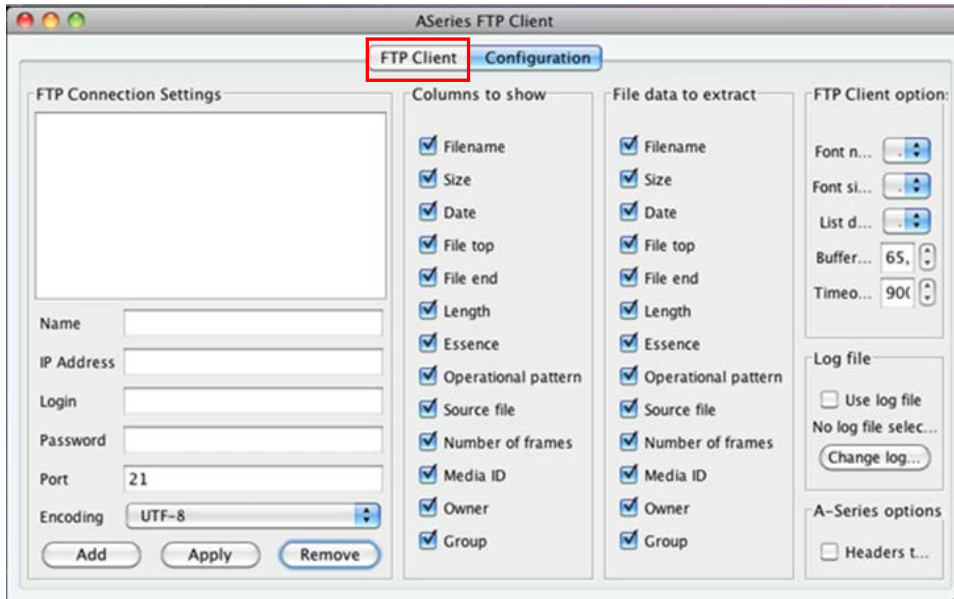
Configuring the LTO-3A Java Applet

FTP Client Settings Configuration

1. Launch the LTO3-AvClient Java applet.
2. Select the **Configuration** tab in the top middle of the Java applet window.



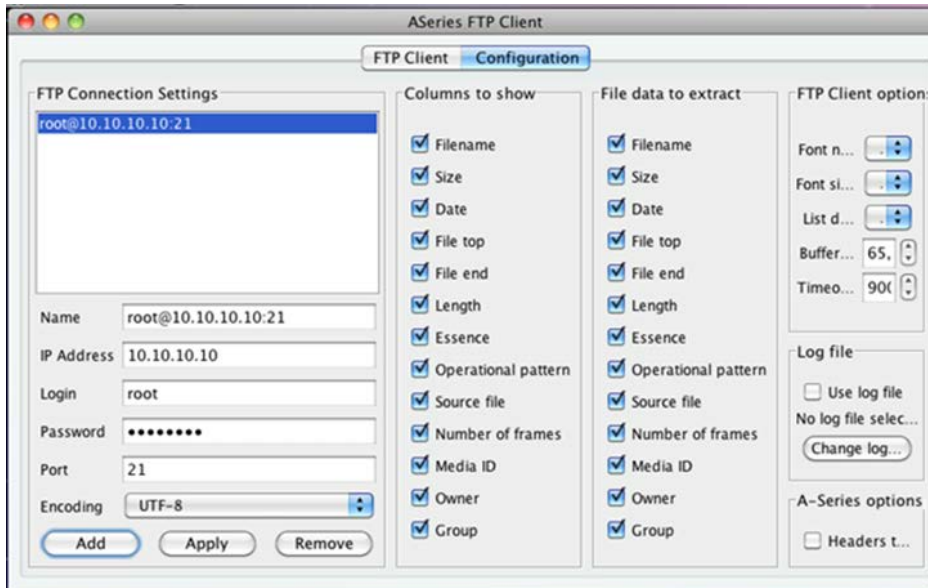
3. Click **FTP Client**.



4. In the FTP Connection Settings on the left of the window, type the following:

- **IP Address** - 10.10.10.10
- **Login** – root
- **Password** – password

5. Click **Add**.



LTO-3A MAC OS Java Applet Setup Instructions

6. In the FTP Connections Option area, double click **root@10.10.10.10:21**.

LTO-3A initializes.

Note: This action takes less than one minute.

The host is now connected to the LTO-3A.

