

# Scalar i500: How to update HP drive firmware from the i500 Web interface


This article covers two ways to update HP drive firmware from the i500 Web interface:

## [I. Uploading Firmware to Individual Drives](#)

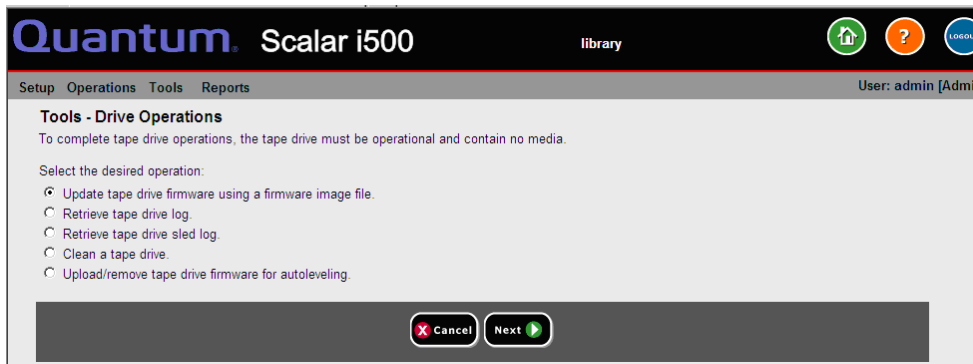
## [II. Uploading Firmware to Drives Via a Fiber Blade for Autoleveling](#)

To follow either of these methods, click on the link above, or scroll down to that section.

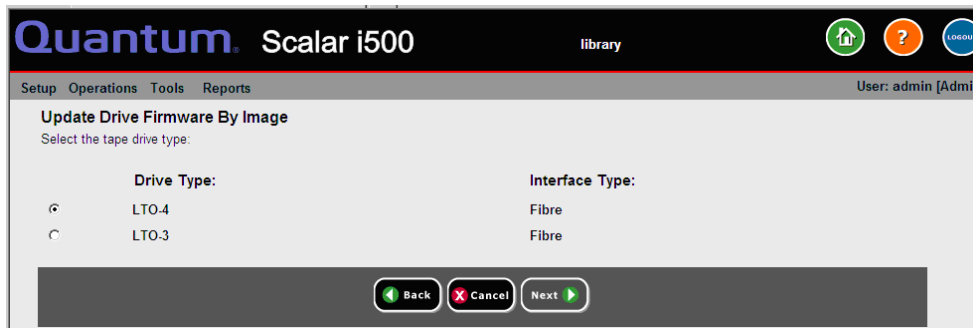
## I. Uploading Firmware to Individual Drives

 **Note:** You will need to perform the following procedure separately for each drive whose firmware you are updating. Each image below shows what to do in the step **after** the image.

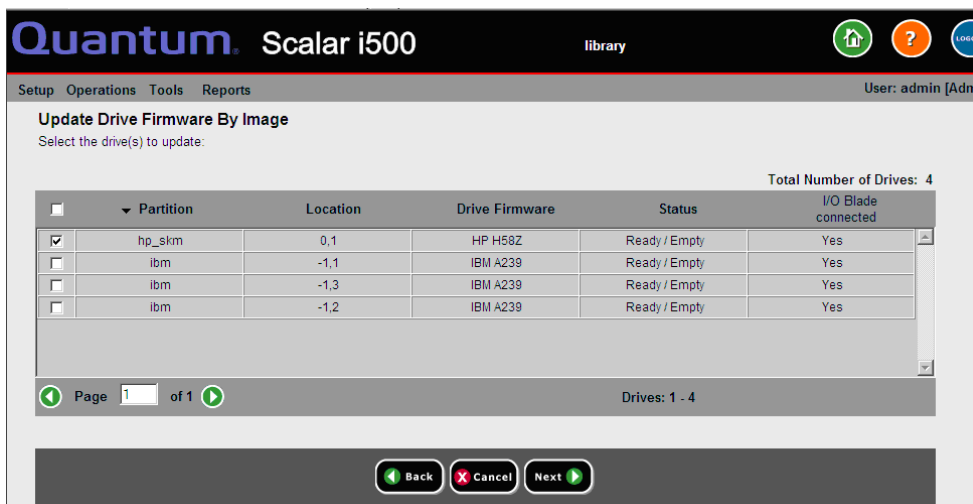
1. Select **Tools > Drive Operations**. You'll see the following window:



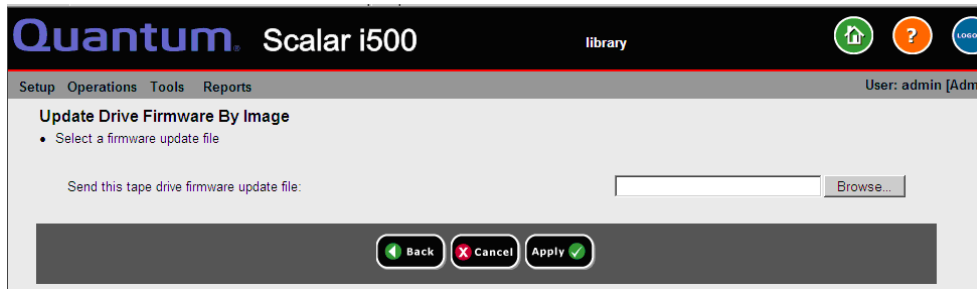
2. Select **Update tape drive firmware using a firmware image file**, then click **Next**. You'll see the following window:



3. Select the drive you want to upgrade, then click **Next**. You'll see the following window:



4. Select a Library Partition and click **Next**. You'll see the following window:

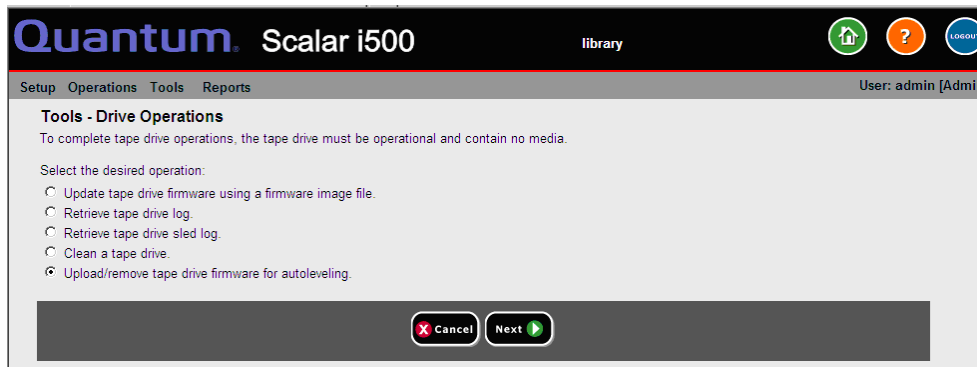


5. Click **Browse** and browse to the downloaded file you have on your system. Then click **Apply**. The firmware will be updated. This may take several minutes.

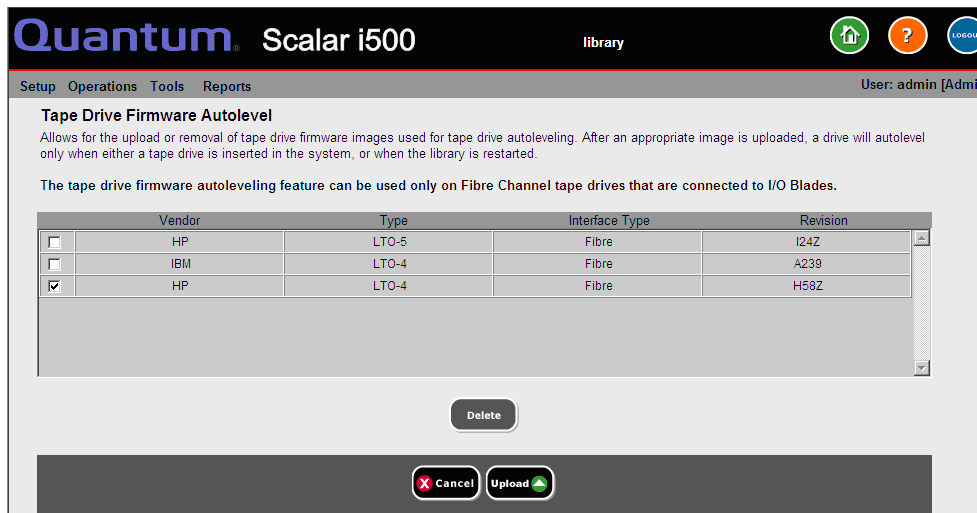
## II. Uploading Firmware to Drives Via a Fiber Blade for Autoleveling

If you Have a fiber blade and prefer to load the firmware to the drives via your blade for autoleveling, follow this procedure.

1. Select **Tools > Drive Operations**. You'll see the following window.



2. Select **Upload/remove tape driver firmware for autolevling**, then click **Next**. You'll see the following window:



3. Select the drive whose firmware you want to upgrade, then click **Upload**.

Any change such as off-lining or on-lining a drive, or rebooting the library, will prompt the blade to ensure that all drives are at the firmware level that is stored on the blade.

**Note:** If you manually upload drive firmware, and a different version is stored on the blade, the blade firmware will take precedence and could downgrade your drive(s).