



NDX 8 Series NAS— Replacing the Chassis

Transferring the Original Serial Number to the Replacement Chassis

IMPORTANT: In order to preserve your warranty benefits and privileges, you must retain your NDX chassis' original serial number

Follow the step-by-step instructions below to attach the original system serial number to your replacement chassis.

Step 1: Find the system serial label on your NDX chassis. It will either be adhered to the chassis, as shown below:



or inserted into a label holder as shown below.



Note: On the 1U chassis, the serial number is located on the top panel in the lower right corner.
On the Tower Rack, the serial number is located on the back panel below the power supply and above the fan.

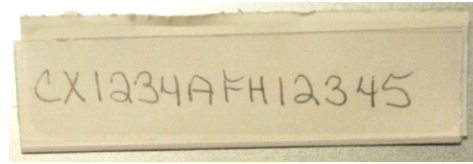
Step 2: Transfer the system serial number from the original chassis to the replacement chassis. How you do this depends on how the serial number is affixed to the original chassis.

If the label is easy to remove from the original chassis, remove it and attach it to the replacement chassis.

If the label is difficult to remove from the original chassis, copy the serial



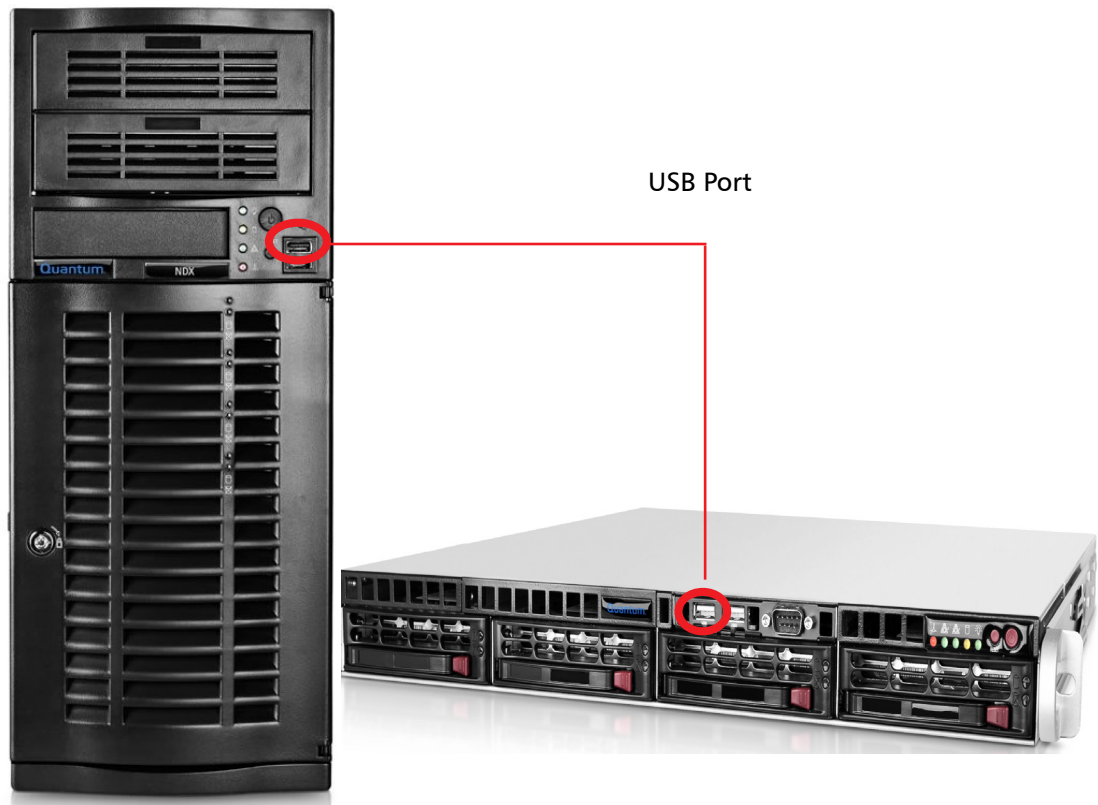
number onto your own label and attach it to the replacement chassis, as shown below.



Replacing the NDX 8 Series NAS Chassis

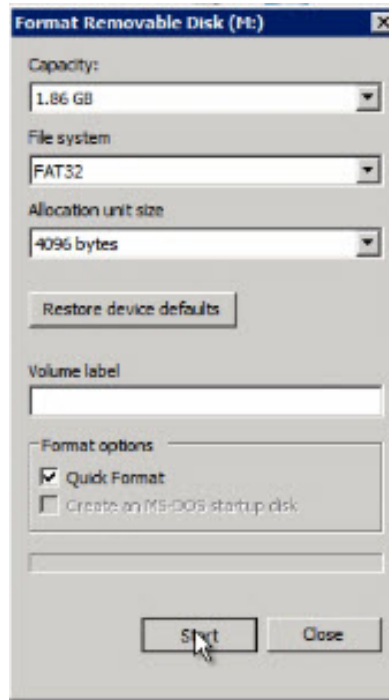
To replace the NDX 8 Series NAS chassis follow the step-by-step instructions below.

- 1 Connect a USB flash drive with a capacity of at least 200 MB to the USB port of a computer running Microsoft Windows.



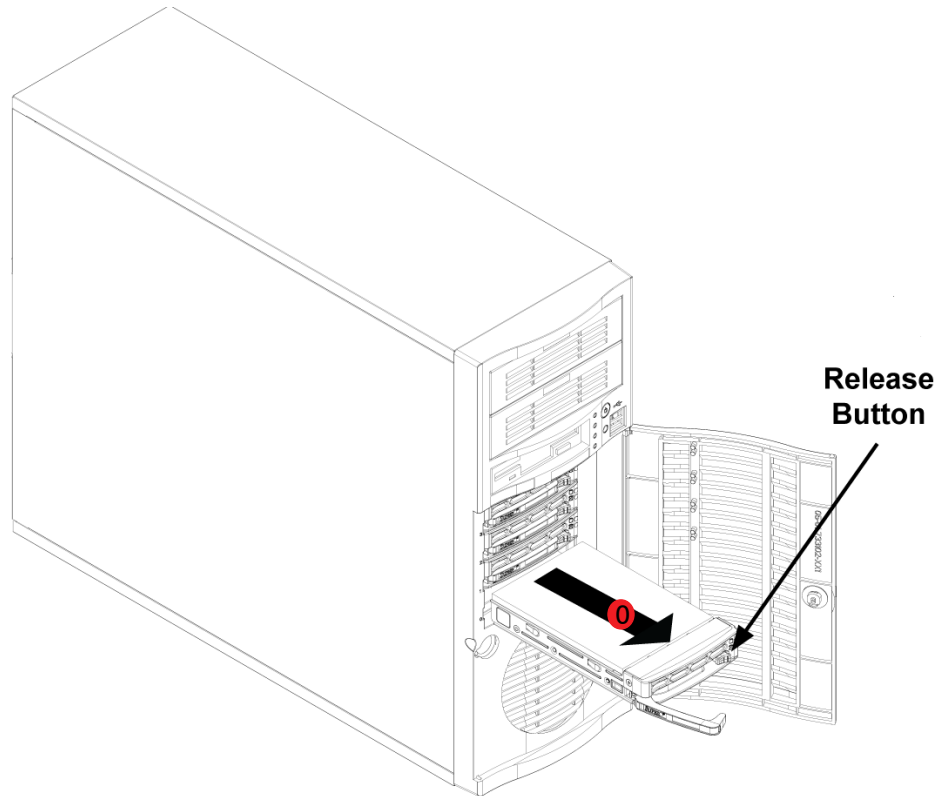
- 2 Open My Computer and right-click the USB drive. Select **Format**, and then from the File System drop-down list select **FAT 32** and select the **Quick Format** check box.

The Format Removable Disk screen displays.



- 3 Click **Start**. When formatting is complete, click **Close**.
- 4 Copy the necessary chassis replacement utility files from their online location <http://www.quantum.com/ServiceandSupport/SoftwareandDocumentationDownloads/NDX8/Index.aspx> to the USB flash drive, and then eject the USB flash drive and disconnect it from the computer's USB port.
- 5 Turn off the NDX system whose chassis you are replacing and remove the hard drives. If the drives are not already labeled according to their position, use a pen to mark the drive position order (0, 1, 2, or 3) on the manufacturer's top center label of each drive.

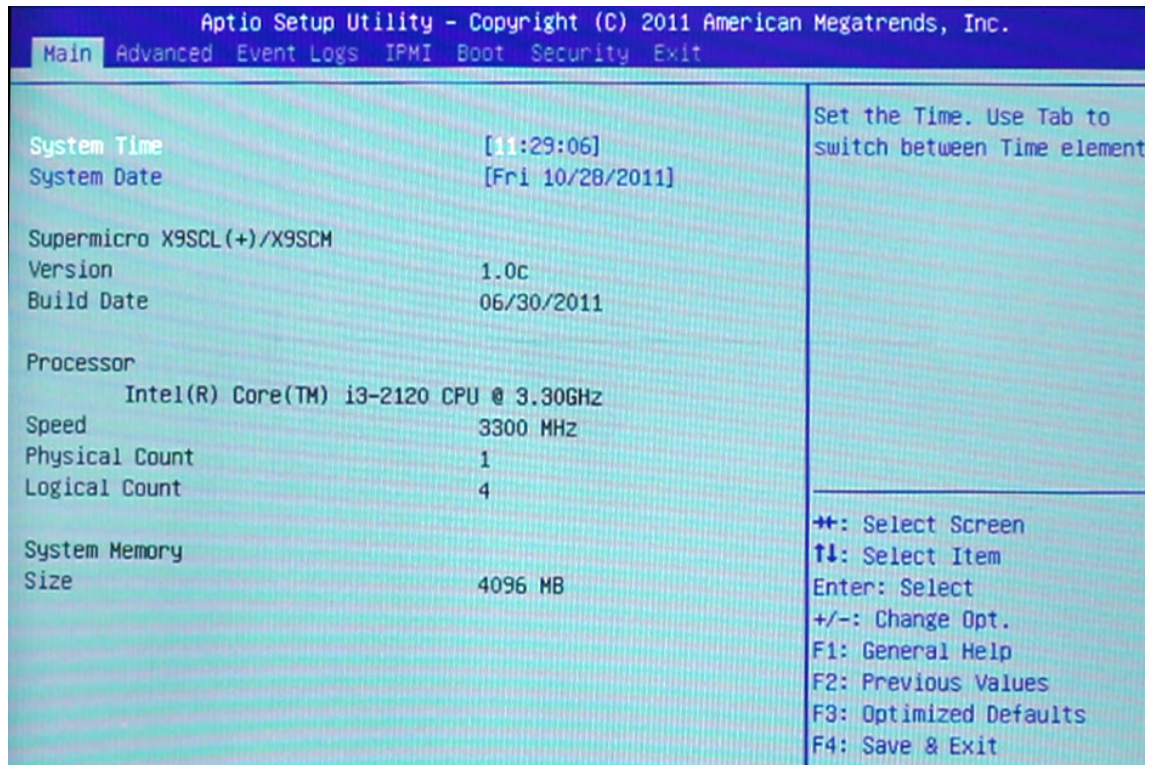
Note: On the tower unit, the 0 drive position is on bottom. On the rackmount unit, the 0 drive position is on the left.



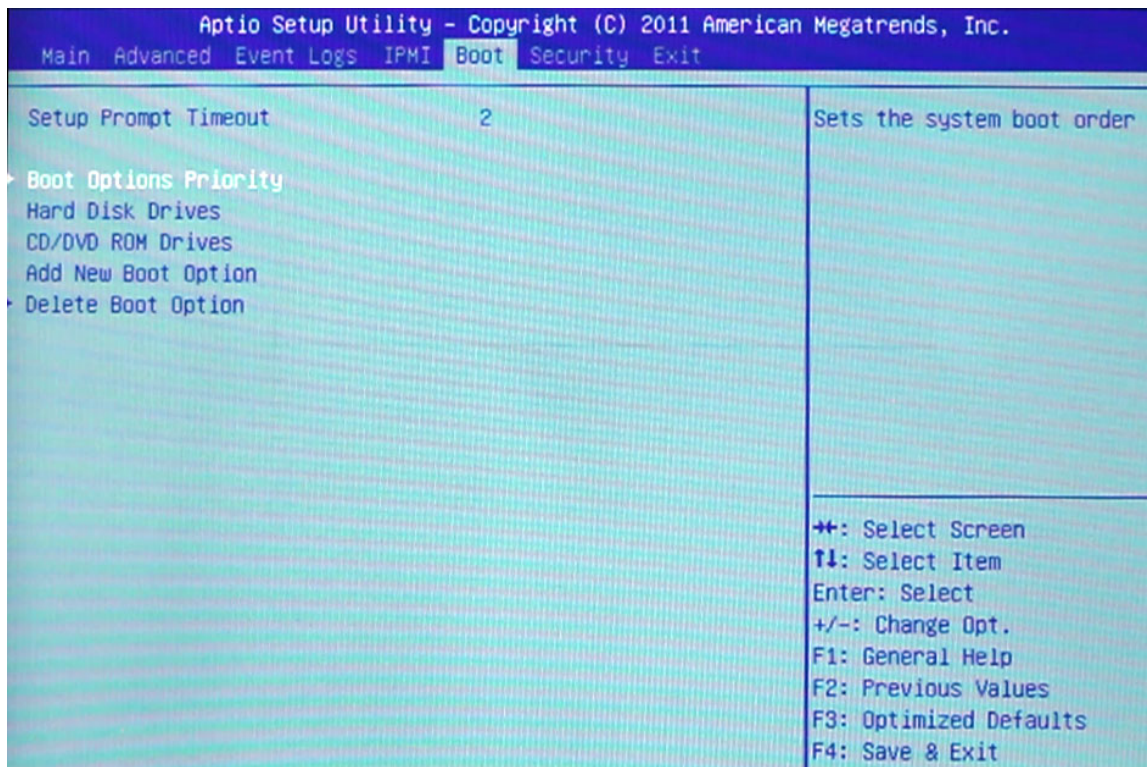
- 6 Move the failed server's hard drives to the new chassis in the same order as they came out of the old chassis.
- 7 Connect the USB flash drive to a USB port on the front of the server.
- 8 Power on the replacement system.

The Quantum logo displays for a few seconds. Then the Raid Configuration displays. Finally, the Quantum logo displays again.

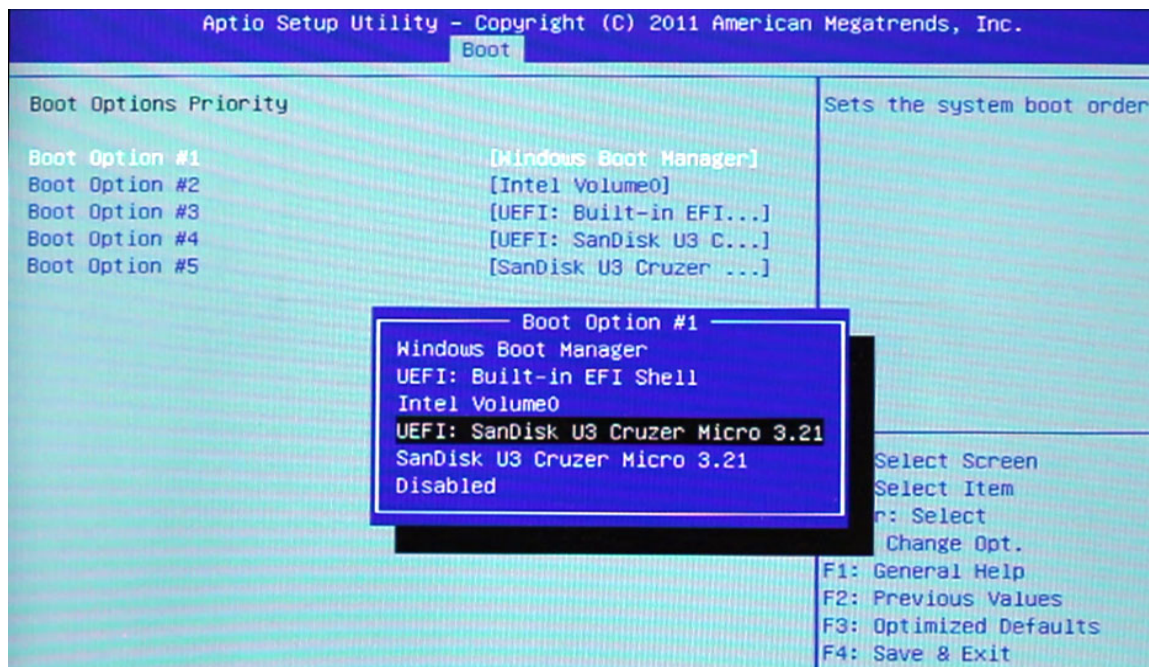
- 9 Press **Delete** when the Quantum logo first appears to enter the BIOS Setup Utility.



- 10 Use the right arrow key to select **Boot**.



- 11 Use the down arrow key to select **Boot Options Priority** and press **Enter**.
- 12 Select **Boot Option #1** and press **Enter**.
- 13 Select **UEFI:** [name of USB flash drive], and then press **Enter**.



- 14 Press **F4** to save and exit. When prompted, select **Yes** and press **Enter**.

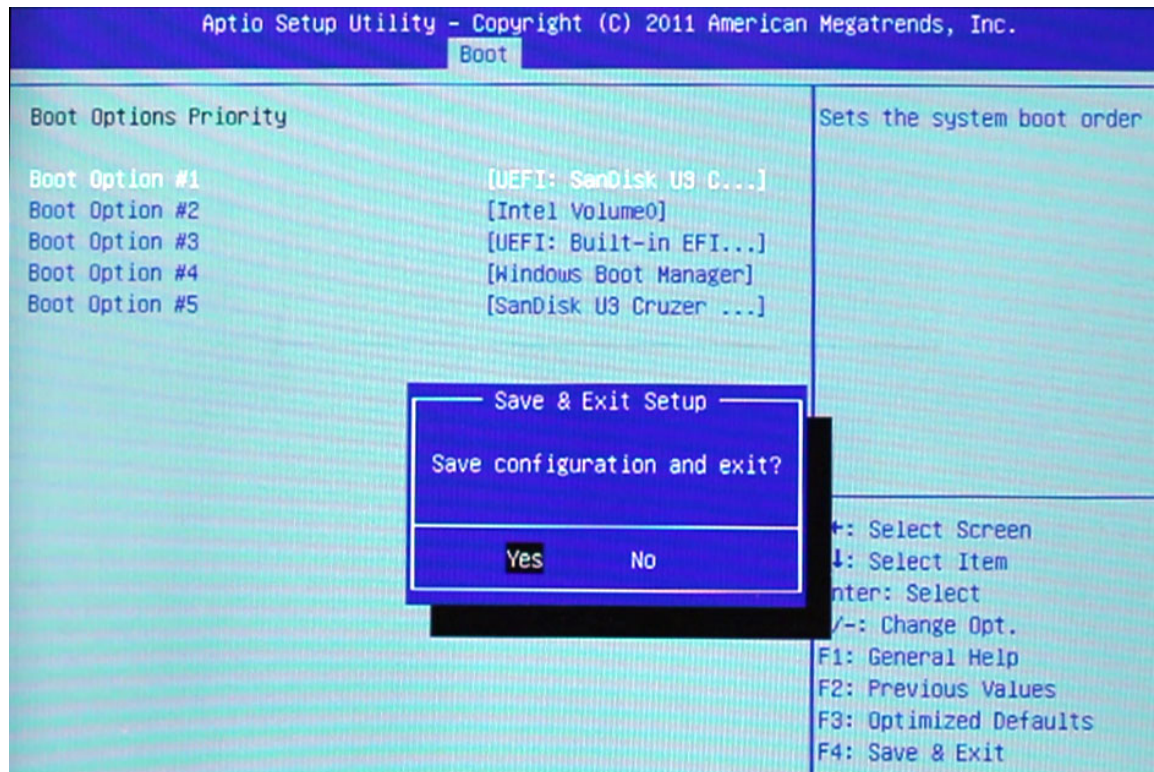
Made in the USA. Quantum Corporation provides this publication "as is" without warranty of any kind, either express or implied, including but not limited to the implied warranties of merchantability or fitness for a particular purpose. Quantum Corporation may revise this publication from time to time without notice.

COPYRIGHT STATEMENT

© 2012 Quantum Corporation. All rights reserved. Your right to copy this manual is limited by copyright law. Making copies or adaptations without prior written authorization of Quantum Corporation is prohibited by law and constitutes a punishable violation of the law.

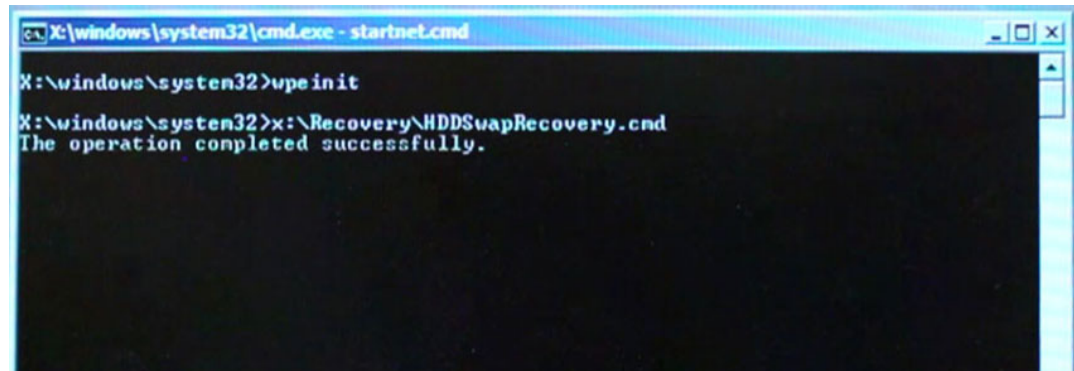
TRADEMARK STATEMENT

Quantum, the Quantum logo, DLT, DLTtape, the DLTtape logo, SuperLoader, Scalar, StorNext, and DXi are registered trademarks of Quantum Corporation, registered in the U.S. and other countries. Preserving the World's Most Important Data. Yours., Backup. Recovery. Archive. It's What We Do., the DLT logo, DLTSage, Dynamic Powerdown, FastSense, FlexLink, GoVault, MediaShield, Optyon, Pocket-sized. Well-armored, SDLT, SiteCare, SmartVerify, StorageCare, Super DLTtape, and Vision are trademarks of Quantum. LTO and Ultrium are trademarks of HP, IBM, and Quantum in the U.S. and other countries. All other trademarks are the property of their respective companies. Specifications are subject to change without notice.



The system boots into a Windows environment where a script automatically runs.

Note: The script takes a few minutes to run and should not be interrupted.



A screenshot of a Windows command prompt window. The title bar reads "X:\windows\system32\cmd.exe - startnet.cmd". The command prompt shows the following text: "X:\windows\system32>upe init", "X:\windows\system32>x:\Recovery\HDDSwapRecovery.cmd", and "The operation completed successfully." The window has a standard Windows XP-style interface with a blue title bar and a scroll bar on the right.

Once the script has completed, the system reboots.

- 15 Immediately, disconnect the USB flash drive from the server's USB port.

Caution: If you do not disconnect immediately the system boots from the USB flash drive again. If this happens, wait for the script to complete and for the system to reboot again.

The system finishes booting and loads the operating system.