

## Contents

HA Overview.....	2
Pre-Conversion Steps .....	2
HA and Distributed LAN Clients .....	2
Converting to HA .....	2
Managing HA .....	4

# StorNext 4.1.1 HA Quick Reference

---

This document summarizes the steps involved in configuring and managing an HA system. For more information about the specific steps and HA in general, see the HA chapter and the HA appendix in the *StorNext User's Guide*.

---

## HA Overview

The StorNext HA feature is a special StorNext configuration with improved availability and reliability. The configuration consists of two similar servers, shared disks and possibly tape libraries. StorNext is installed on both servers. One of the servers is dedicated as the initial primary server and the other the initial secondary (standby) server.

StorNext File System and Storage Manager run on the primary server. The secondary server runs StorNext File System and special HA supporting software.

The StorNext failover mechanism allows the StorNext services to be automatically transferred from the current active primary server to the secondary server in the event of the primary server failure. The roles of the servers are reversed after a failover event. Only one of the two servers is allowed to control and update StorNext metadata and databases at any given time. The HA feature enforces this rule by monitoring for conditions that might allow conflicts of control that could lead to data corruption.

StorNext provides two main HA functions: **Convert to HA** and **Manage HA**.

---

## Pre-Conversion Steps

Before converting to HA, you should perform the following steps:

- 1 Identify two servers, which must have similar hardware running the same version of Linux, and have identical LAN and SAN connectivity. For example, on multiple Ethernet port connections, both systems must be connected to the same Ethernet ports (eth0 on System A and System B going to LAN1, eth1 on System A and System B going to LAN2, etc.)
- 2 Synchronize the clocks on both systems.
- 3 Install StorNext on both servers.
- 4 Enter StorNext license information on both server nodes.
- 5 Launch StorNext on one server.

Configure an unmanaged file system for use as the HA shared file system. (For more information about creating a file system, see the Configuration Wizard chapter in the *StorNext User's Guide*.)

---

### HA and Distributed LAN Clients

---

On a StorNext HA system using the StorNext Distributed LAN Client/Server (DLC) feature:

When configuring DLC Server on the MDCs of an HA cluster, it must be configured by hand on each MDC. Service will be lost when an HA Reset occurs, so DLC clients should be configured to access the DLC file systems through both MDCs.

This practice allows for the best and highest availability of the DLC capability. Ideally, each node in the HA pair should have the same number of NICs and be on the same networks.

---

## Converting to HA

Converting to HA consists of selecting your dedicated unmanaged StorNext file system for use as the controlling shared file system, and then instructing StorNext to convert the node to HA.

---

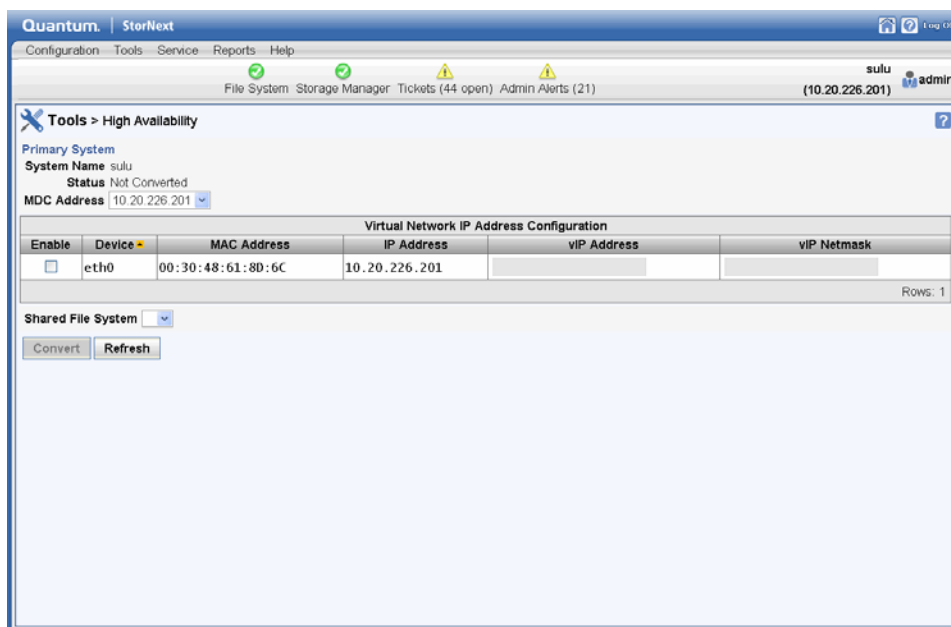
**Note:** The **Convert** menu option will be unavailable (grayed out) on the **Tools** menu if you do not have a secondary system. If you have not already done so, specify a secondary system by using the Name Servers function. For more information, see the Configuration Wizard chapter in the *StorNext User's Guide*.

---

Follow these steps to configure HA:

- 1 Choose **High Availability > Convert** from the **Tools** menu. The **Tools > High Availability** screen appears.

Figure 1 Tools > HA Screen



- 2 At the **MDC Address** field, select one IP address to be placed in the `ha_peer` file for use in administrative operations between the MDCs in the HA Cluster.
- 3 At the **Shared File System** field, select the shared file system you want to convert to HA.
- 4 If your HA cluster also runs the blockpool, select **Enable** and then enter the virtual IP address and virtual netmask. (Ask your network administrator for the vIP address and netmask.)
- 5 Click **Convert** to convert the primary node to HA.
- 6 Enter the IP address of the secondary system on the same LAN, and then click **Scan**. If you do not already have licenses for the secondary system in the license file, you will be required to switch to the license page to import them before continuing.

---

**Note:** Until you have performed the scan, you cannot import the license file for the secondary system using StorNext’s import function. After you have performed the scan you can import licenses for the secondary. Following the conversion to HA, the license file will contain both primary and secondary licenses and will be present on both servers.

---

- 7 Click **Convert** to convert the secondary system.

## Managing HA

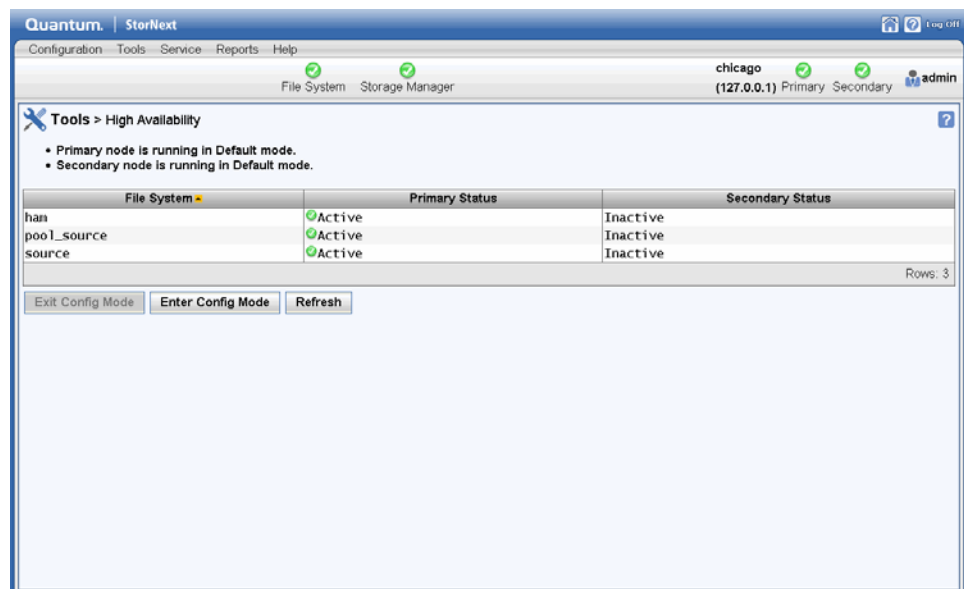
The StorNext Manage HA screen is used to monitor the current statuses of your primary and secondary servers.

The screen includes **Enter Config Mode** and **Exit Config Mode** buttons to place the HA Cluster in a state that allows the Primary MDC to restart CVFS and individual FSMs without incurring an HA Reset, failover of any file systems, or transfer of Primary status to the peer MDC. This is required for making configuration changes to the HaShared file system through the GUI.

Follow these steps to lock the HA cluster and enter Config mode, and subsequently to exit Config mode:

- 1 Choose **High Availability > Manage** from the **Tools** menu. The **Manage High Availability** screen appears.

Figure 2 Manage HA Screen



- 2 Click **Enter Config Mode**.
- 3 When the confirmation message appears, click **Yes** to proceed or **No** to abort.
- 4 Click **OK** when a message informs you that the HA cluster was successfully locked.
- 5 When you are ready to unlock the cluster and exit Config mode, click **Exit Config Mode**. All file systems will be stopped on the primary MDC and then restarted on both MDCs.
- 6 When the confirmation message appears, click **Yes** to proceed or **No** to abort.
- 7 Click **OK** when a message informs you that the HA cluster was successfully unlocked.

## Notes



## Notes



For assistance, contact the Quantum Customer Support Center:  
USA: 800-284-5101 (toll free) or 949-725-2100  
EMEA: 00800-4-782-6886 (toll free) or +49 6131 3241 1164  
APAC: +800 7826 8887 (toll free) or +603 7953 3010  
Worldwide: <http://www.quantum.com/ServiceandSupport>

# Quantum®

**Backup. Recovery. Archive. It's What We Do.**

©2011 Quantum Corporation. All rights reserved. Quantum, the Quantum logo, and all other logos are registered trademarks of Quantum Corporation or of their respective owners. Protected by Pending and Issued U.S. and Foreign Patents, including U.S. Patent No. 5,990,810.

### About Quantum

Quantum Corp. (NYSE:QTM) is the leading global storage company specializing in backup, recovery and archive. Combining focused expertise, customer-driven innovation, and platform independence, Quantum provides a comprehensive range of disk, tape, media and software solutions supported by a world-class sales and service organization. This includes the DXi™-Series, the first disk backup solutions to extend the power of data deduplication and replication across the distributed enterprise. As a long-standing and trusted partner, the company works closely with a broad network of resellers, OEMs and other suppliers to meet customers' evolving data protection needs.