

DDS-4/DAT 72

DDS-4/DAT 72

Quantum DDS-4/DAT 72 Autoloader User's Guide, 50002761, B01, July 2005
Made in USA.

Quantum Corporation provides this publication "as is" without warranty of any kind, either express or implied, including but not limited to the implied warranties of merchantability or fitness for a particular purpose. Quantum Corporation may revise this publication from time to time without notice.

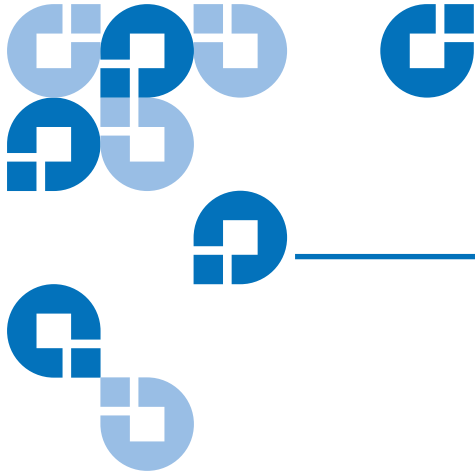
COPYRIGHT STATEMENT

Copyright 2005 by Quantum Corporation. All rights reserved.

Your right to copy this manual is limited by copyright law. Making copies or adaptations without prior written authorization of Quantum Corporation is prohibited by law and constitutes a punishable violation of the law.

TRADEMARK STATEMENT

Quantum and the Quantum logo are all registered trademarks of Quantum Corporation. Other trademarks may be mentioned herein which belong to other companies.



Contents

Preface	xi
----------------	-----------

Chapter 1	Introduction and Quick Start Installation	1
	Introduction	2
	Features	3
	Applications.....	4
	Tape Drive Components	5
	Installing the Internal Tape Drive	5
	Installing the External Tape Drive.....	6

Chapter 2	Installing Internal Tape Drives	9
	Unpacking.....	10
	What Else You Need.....	11
	Avoiding Electrostatic Damage	11
	Installation Summary	12
	Collecting the Necessary Tools	12
	Reviewing Drive Default Settings	13
	SCSI ID	15

Parity Checking	17
Terminator Power	17
Data Compression.....	17
Media Recognition System (DDS-4 Drives Only)	18
Power-On Self-Test	18
Host Operating System	19
SCSI Wide/Narrow Configuration (DDS-4 Drives Only)	20
Vendor ID	21
Recording Drive Information	21
Accessing the Inside of Your Computer	21
Mounting the Internal Tape Drive	22
Mounting the Drive into a 3.5-inch Drive Bay	23
Mounting the Drive into a 5.25-inch Drive Bay	24
Connecting a SCSI Cable	25
Connecting to a Wide SCSI Connector	26
Connecting to a Narrow SCSI Connector	26
Checking SCSI Termination.....	27
Connecting a Power Cable	28
Completing Your Installation	28
Registering Your Tape Drive	29

Chapter 3	Installing External Tape Drives	31
------------------	--	-----------

Unpacking	32
What Else You Need	32
Installation.....	32
Reviewing Drive Default Settings.....	33
SCSI ID.....	34
Parity Checking	34
Data Compression.....	34
Media Recognition System (DDS-4 Drives Only)	35
Power-On Self-Test	35
Host Operating System	35
Recording Drive Information	35
Connecting a SCSI Cable	36
Connecting to a Wide SCSI Connector	36
Connecting to a Narrow SCSI Connector	37
Checking SCSI Termination.....	37

Connecting a Power Cable.....	38
Completing Your Installation.....	39
Registering Your Tape Drive.....	39

Chapter 4 Operating Your Tape Drive 41

Using the Appropriate Media.....	41
Handling Cartridges.....	42
Loading a Cartridge.....	43
Initializing a Blank Cartridge.....	44
Unloading a Cartridge	44
Write-Protecting a DDS Cartridge.....	45
Cleaning the Tape Heads.....	46

Chapter 5 Understanding the Drive LEDs 49

Front Panel LEDs	49
LED Summary	50
Clean LED	51
Media LED	52
Drive LED	52

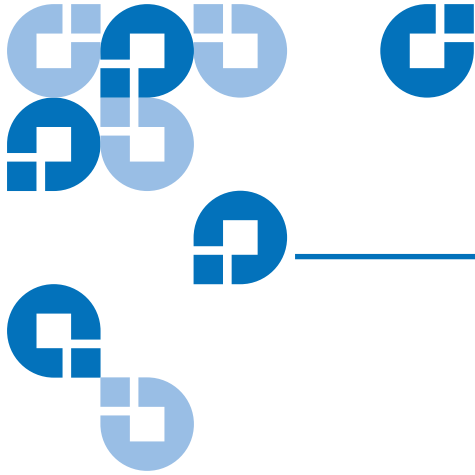
Chapter 6 Troubleshooting 55

Missing or Damaged Parts	56
SCSI ID Problems.....	56
SCSI Termination Problems	56
Mounting Hardware Problems.....	57
Drive Does Not Work.....	57
Power-On Self-Test Fails.....	57
Computer Does Not Boot	58
Computer Does Not Recognize Drive	58
Backup Program Does Not Recognize Drive.....	59
Write Error	59
Hardware Error.....	60

Appendix A	Loading Revised Firmware	61
	Firmware Upgrade Methods	61
	Using Firmware Cartridges	62

Appendix B	Disposal of Electrical and Electronic Equipment	63
-------------------	--	-----------

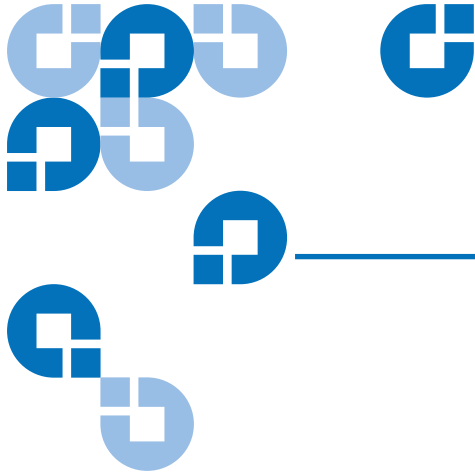
Index		65
--------------	--	-----------



Figures

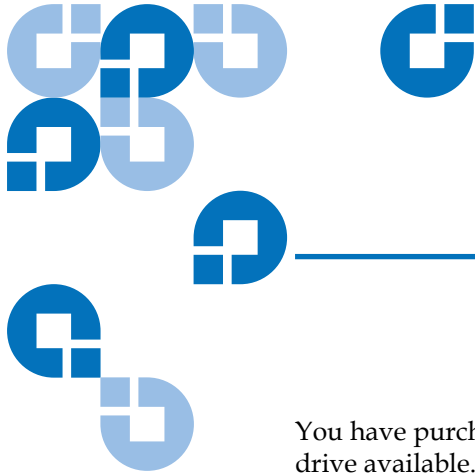
Figure 1	Drives Covered in This User's Guide.....	2
Figure 2	Front Panel Components.....	5
Figure 3	Internal Tape Drive Jumper Settings.....	14
Figure 4	Internal Tape Drive Switch Settings.....	15
Figure 5	Mounting an Internal Tape Drive.....	23
Figure 6	Mounting Holes for the Internal Tape Drive in a 3.5-inch Installation.....	24
Figure 7	Mounting Holes for the Internal Tape Drive in a 5.25-inch Installation.....	25
Figure 8	SCSI Interface Connector on the Internal Tape Drive.....	26
Figure 9	Two SCSI Termination Examples for the Internal Tape Drives.....	27
Figure 10	Power Connector on the Internal Tape Drive.....	28
Figure 11	Back Panel of the External Tape Drive.....	34
Figure 12	Two SCSI Termination Examples for the External Tape Drives.....	38
Figure 13	Loading a Cartridge.....	44
Figure 14	Eject Button on Front Panel of Drive.....	45

Figure 15	Write-protecting a DDS Cartridge	46
Figure 16	Front Panel LEDs on Internal Drive.....	50



Tables

Table 1	DDS-4 and DAT 72 Capacity and Transfer Rates.....	4
Table 2	Internal Tape Drive Default Settings.....	13
Table 3	SCSI IDs and Corresponding Jumper Settings	16
Table 4	Host Operating Systems and Corresponding Switch Settings.....	19
Table 5	External Tape Drive Default Settings.....	33
Table 6	Matching Drives with the Media They Support.....	42
Table 7	Cartridge Guidelines and Pitfalls.....	42
Table 8	LED Quick Summary.....	50
Table 9	Clean LED.....	51
Table 10	Media LED.....	52
Table 11	Drive LED.....	53



Preface

You have purchased the finest, most reliable digital data storage (DDS) drive available. As the industry leader, Quantum has once again revolutionized storage with the Model DDS-4 and Model DAT 72 drives. The DAT 72 and DDS-4 DDS drives represent Quantum's commitment to engineering reliable and durable tape drive products that implement leading-edge technology.

Audience

This manual is written for drive owners and operators of the DDS-4 and DAT 72 drives.

The guide has been written for everyday user's of the drives to help with initial set-up and maintenance.

Purpose

This User's Guide describes how to install, configure, and care for the DDS-4 and DAT 72 external and internal tape drives. Please read the appropriate chapters and appendixes carefully, and keep this Guide handy for future reference.

This document provides information about the DDS-4 and DAT 72 drives including:

- A quick installation guide
- Installing the tape drives (specific to internal and external drives)
- Basic tape drive operations
- Understanding the LEDs
- Troubleshooting guide.

Document Organization

This document is arranged to help you quickly find the information you need to run and operate your DDS-4 or DAT 72 drive.

The document is organized as follows:

- [Chapter 1, Introduction and Quick Start Installation](#) provide a product overview and quick-start instructions for getting the drives up and running in the shortest possible time.
- [Chapter 2, Installing Internal Tape Drives](#) describes how to install internal DDS-4 and DAT 72 drives.
- [Chapter 3, Installing External Tape Drives](#) describes how to install the external tape drives.
- [Chapter 4, Operating Your Tape Drive](#) describes how to operate the drives.
- [Chapter 6, Troubleshooting](#) describes the front-panel LEDs on the drives.
- [Appendix A, Loading Revised Firmware](#) describes how to upgrade firmware for your tape drive.
- [Appendix B, Disposal of Electrical and Electronic Equipment](#) provides the WEEE compliance statement.

This document concludes with a detailed index.

Notational Conventions

This manual uses the following conventions:

Note: Notes emphasize important information related to the main topic.

Caution: Cautions indicate potential hazards to equipment and are included to prevent damage to equipment.

Warning: Warnings indicate potential hazards to personal safety and are included to prevent injury.

This manual uses the following:

- Right side of the library — Refers to the right side as you face the component being described.
- Left side of the library — Refers to the left side as you face the component being described.

Related Documents

Documents related to the DDS-4 and DAT 72 drives are shown below:
Refer to the appropriate product manuals for information about your tape drive and cartridges.

SCSI-2 Specification

The SCSI-2 communications specification is the proposed American National Standard for information systems, dated March 9, 1990. Copies may be obtained from:

Global Engineering Documents
15 Inverness Way, East
Englewood, CO 80112
(800) 854-7179 or (303) 397-2740

Contacts

Quantum company contacts are listed below.

Quantum Corporate Headquarters

To order documentation on the DDS-4, DAT 72, or other products contact:

Quantum Corporation
P.O. Box 57100
Irvine, CA 92619-7100
(949) 856-7800
(800) 284-5101

Technical Publications

To comment on existing documentation send e-mail to:

doc-comments@quantum.com

Quantum Home Page

Visit the Quantum home page at:

www.quantum.com

Customer Support

The Quantum Customer Support Department provides a 24-hour help desk that can be reached at:

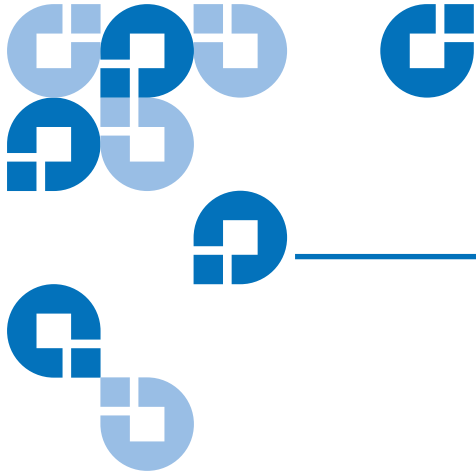
North/South America: (949) 725-2100 or (800) 284-5101
Asia/Pacific Rim: (International Code) + 61 7 3839 0988
Europe/Middle East/Africa: (International Code) + 44 (0) 1256 848748

Send faxes for the Customer Support Department to:

North/South America: (949) 725-2176
Asia/Pacific Rim: (International Code) + 61 7 3839 0955
Europe/Middle East/Africa: (International Code) + 44 (0) 1256 848777

Send e-mail for the Customer Support Department to:

North/South America: www.quantum.com/support
Asia/Pacific Rim: apachelp@quantum.com
Europe/Middle East/Africa: eurohelp@quantum.com



Chapter 1

Introduction and Quick Start Installation

This chapter introduces your internal or external tape drives and provides quick-start instructions for getting the tape drives up and running in the shortest possible time.

Topics in this chapter are:

- [Introduction](#)
- [Features](#)
- [Tape Drive Components](#)
- [Installing the Internal Tape Drive](#)
- [Installing the External Tape Drive](#)

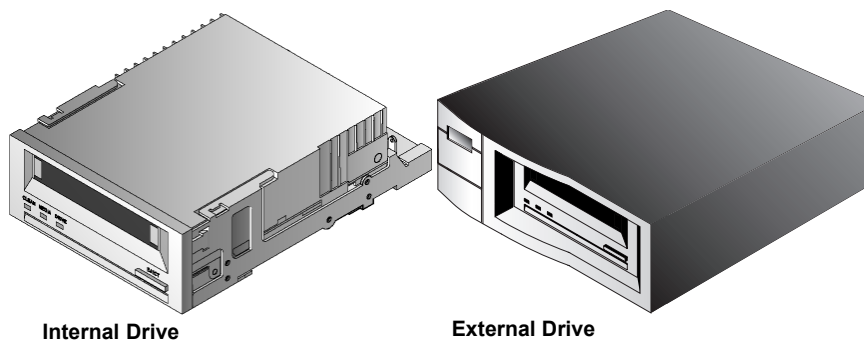
Note: For more detailed instructions, see [chapter 3](#) for internal drive installation instructions or [chapter 4](#) for external drive installation instructions.

Introduction

You have purchased the finest, most reliable digital data storage (DDS) drive available. As the industry leader, Quantum has once again revolutionized storage with the Model DDS-4 and Model DAT 72 drives. The DAT 72 and DDS-4 DDS drives represent Quantum's commitment to engineering reliable and durable tape drive products that implement leading-edge technology.

Designed for computer environments that require high-performance, high-capacity data storage, the DDS-4 and DAT 72 drives are based on a 3.5-inch mechanism and available as external and internal tape drives (see [figure 1](#)). The drives combine established Digital Audio Tape (DAT) technology, high-density recording, and hardware data-compression capabilities with Quantum's proven computer-grade design to provide unmatched reliability and performance characteristics among DDS products.

Figure 1 Drives Covered in This User's Guide



Features

The following list summarizes the key features of the DDS-4 and DAT 72 drives.

- Compatibility
 - DDS-4: Supports DDS-2, DDS-3, and DDS-4 recording formats.
 - DAT 72: Supports DDS-3, DDS-4, and DDS 5th Generation recording formats.
- LVD / Ultra Wide SCSI connection
- Three convenient form-factors:
 - 3.5-inch internal form-factor for installation in a 3.5-inch half-height space
 - 3.5-inch half-height drive factory-installed with 5.25-inch mounting rails and bezel for installation in a 5.25-inch half-height space
 - External subsystem with built-in, auto-sensing, worldwide power supply
- Support for various native data-storage capacities (see [table 1](#))
- High-speed transfer rates for fast backups (see [table 1](#))
- Advanced onboard DDS-DC hardware using Lempel-Ziv (DCLZ) data-compression, doubling the drive's uncompressed capacity (that is a 20 GB uncompressed drive can be 40 GB with compression) (see [table 1](#)).
- High-performance SCSI burst transfer rates
- Three levels of error-correction code (ECC) and four-head design for read-after-write (RAW) error detection and correction (uncorrectable error rate of less than 1 in 10¹⁵ bits)
- "Flying" preamplifier for greater signal-to-noise ratio
- Flash memory to store setup parameters and enable field firmware upgrades
- Automatic power-on self-test

- State-of-the-art sealed drive mechanism and tape handling components for improved immunity to airborne contaminants and extended media life

Applications

The DAT 72 and DDS-4 drives are ideal for workstation, server, and network/enterprise applications. These applications include, but are not limited to:

- Backup of high-capacity fixed discs
- Data interchange between systems
- Network servers
- Online data collection
- Near-line secondary storage for all types of text, graphics, or multimedia information
- Archival storage

Capacity and Transfer Rates

Table 1 DDS-4 and DAT 72 Capacity and Transfer Rates

Characteristics	DDS-2*	DDS-3	DDS-4	DDS 5th Generation**
Tape Length (meters)	120	125	150	170
Native Capacity (Gbytes)	4	12	20	36
Compressed Capacity (Gbytes)	8	24	40	72
Native Transfer Rate (Mbytes/sec)	1.375	2.75	2.75	3.5

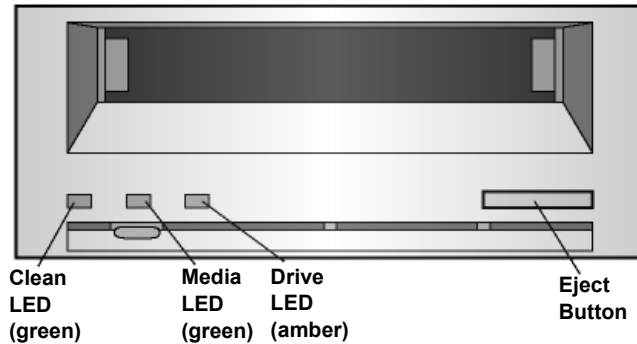
*Applies to DDS-4 drives only

**Applies to DAT 72 drives only

Tape Drive Components

[Figure 2](#) illustrates the major components of the tape drives.

Figure 2 Front Panel Components



Installing the Internal Tape Drive

Use the following procedure to install the internal tape drive. Print this page and check each step as you complete it. If you need more information about a step, turn to the section referenced in the step.

- 1 Unpack the contents of your drive package, and check for missing or damaged items.
- 2 Identify any other items you need to perform this installation.
- 3 Collect the tools you will need to perform the installation.
- 4 Observe Electrostatic precautions when handling the internal tape drive.
- 5 Review the drive's default settings and change them if necessary:
 - SCSI ID: 6
 - Parity Checking: Enabled
 - Terminator Power: Disabled

- Data Compression: Enabled
 - Media Recognition (DDS-4 drives only): Enabled
 - Power-On Self-Test: Enabled
 - Host Operating System: Windows 98/Me/XP/NT/2000/2003 Server
 - SCSI Interface Compatibility (DDS-4 drives only): Wide SCSI
 - Vendor ID: SEAGATE DAT
- 6** Turn off your computer, remove its covers and power cable, and select a mounting bay for the drive. Depending on your drive, select a 3.5-inch or 5.25-inch bay.
 - 7** Mount the drive into the bay and secure using the supplied screws.
 - 8** Connect a SCSI interface cable to the drive.
 - 9** Be sure the internal tape drive is not the last device on the SCSI bus (the drive does not provide SCSI termination).
 - 10** Connect a power cable to the drive.
 - 11** Replace the computer covers and power cable, turn on the computer, and verify that the internal tape drive is operating properly.
 - 12** Register your tape drive.

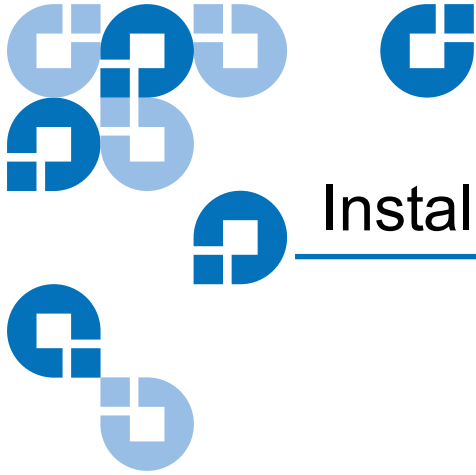
Installing the External Tape Drive

Use the following procedure to install the external tape drive. Print this page and check each step as you complete it. If you need more information about a step, turn to the section referenced in the step.

- 1** Unpack the contents of your drive package, and check for missing or damaged items.
- 2** Identify any other items you need to perform this installation.
- 3** Review the drive's default settings and change them if necessary:
 - SCSI ID: 6
 - Parity Checking: Enabled

- Terminator Power: Supplied to the SCSI bus
 - Data Compression: Enabled
 - Media Recognition (DDS-4 drives only): Enabled
 - Power-On Self-Test: Enabled
 - Host Operating System: Windows 98/Me/XP/NT/2000/2003 Server
 - SCSI Interface Compatibility (DDS-4 drives only): Wide SCSI
 - Vendor ID: SEAGATE DAT
- 4** Connect a SCSI interface cable to the drive.
 - 5** Check the SCSI termination.
 - 6** Connect a power cable to the drive.
 - 7** Turn on the computer, turn on the external tape drive, and verify that the external tape drive is operating properly.
 - 8** Register your tape drive.

Chapter 1 Introduction and Quick Start Installation
Installing the External Tape Drive



Installing Internal Tape Drives

This chapter describes how to install internal DDS-4 and DAT 72 drives.

Topics in this chapter are:

- [Unpacking](#)
- [What Else You Need](#)
- [Avoiding Electrostatic Damage](#)
- [Installation Summary](#)
- [Collecting the Necessary Tools](#)
- [Reviewing Drive Default Settings](#)
- [SCSI ID](#)
- [Parity Checking](#)
- [Terminator Power](#)
- [Data Compression](#)
- [Media Recognition System \(DDS-4 Drives Only\)](#)
- [Power-On Self-Test](#)
- [Host Operating System](#)
- [SCSI Wide/Narrow Configuration \(DDS-4 Drives Only\)](#)
- [Vendor ID](#)

- [Recording Drive Information](#)
- [Accessing the Inside of Your Computer](#)
- [Mounting the Internal Tape Drive](#)
- [Connecting a SCSI Cable](#)
- [Checking SCSI Termination](#)
- [Connecting a Power Cable](#)
- [Completing Your Installation](#)
- [Registering Your Tape Drive](#)

Note: If you have an external drive, refer to Chapter 4 for installation instructions.

Unpacking

Before you unpack the contents of your drive package, inspect the shipping containers for damage. If you spot damage to the container, notify your carrier immediately.

When you unpack the package, compare the items received with those on the packing list. If any item is missing or damaged, please contact your place of purchase immediately.

Note: Internal tape drives come in two mounting configurations, one for 3.5-inch half-height bays and one for 5.25-inch half-height bays. These two drives are identical, except that the drive designed for 5.25-inch installations has mounting brackets on each side of the drive and a different front bezel.

What Else You Need

In addition to the contents included with your internal tape drive, you need the following items to install your internal tape drive.

- A SCSI host bus adapter that is properly installed and configured in a host computer
- A 3.5-inch or 5.25-inch half-height bay
- A SCSI ribbon cable
- Backup application software that supports the internal tape drive. For a list of the latest backup software applications tested with the internal DDS-4 and DAT 72 tape drives, please visit our Web site at www.quantum.com/support.

Avoiding Electrostatic Damage

Your internal tape drive has very sensitive components that are prone to damage from electrostatic discharge (ESD). Use extreme care when handling the drive, as it can be damaged by ESD.

Before handling the drive, read these ESD instructions to prevent damage to the drive.

- Wear an ESD-preventive grounding wrist strap or observe similar ESD precautions when working with the drive. Be sure the wrist strap makes good skin contact. Do not remove the wrist strap until you finish working with the drive.
- Avoid contact between the drive, other equipment, and clothing. The wrist strap only protects the equipment from ESD voltages on the body; ESD voltages on clothing can still cause damage.
- When the drive is not being used, keep it in its antistatic bag.
- Before you remove the drive from the antistatic bag, touch a metal or grounded surface to discharge any static electricity buildup from your body.

- Hold the drive by its edges only. Avoid touching any exposed parts on the printed circuit board.
- Always place the drive on top of or inside the antistatic bag to reduce the chance of ESD damage.

Installation Summary

The following steps summarize the installation procedure for your internal tape drive.

- 1 Gather the Necessary Tools
- 2 Review the Drive's Default Settings
- 3 Record Your Drive's Information
- 4 Access the Inside of the Computer
- 5 Mount the Drive into the Computer Mounting Bay
- 6 Attach a SCSI Interface Cable
- 7 Attach a Power Cable
- 8 Complete and Verify Your Installation

Collecting the Necessary Tools

Before proceeding with the installation, gather the tools you will need to install the internal tape drive into the computer mounting bay. The following list identifies some of the tools you will need. You may need additional items, depending on your installation requirements.

- PHILLIPS® screwdriver
- Flatblade screwdriver, if your computer uses flathead screws
- Torx screwdriver, if your computer uses torx screws
- Computer documentation, which you can refer to during the installation

Reviewing Drive Default Settings

Your internal tape drive comes with various default settings. These settings are configured using jumpers and switches.

- Jumpers are located on the back of the drive, between the SCSI interface and power connectors
- Switches are located on the underside of the drive. If you change a switch setting, you must turn the drive off and then on to have the new setting take effect.

You may need to change these settings to suit your requirements. Review the default settings in [table 2](#) to determine whether they suit your requirements or need to be changed.

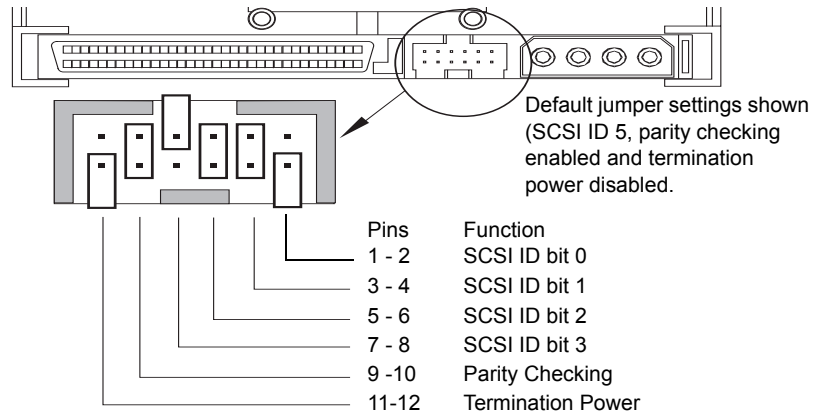
- If you do not need to change these default settings, skip to [Accessing the Inside of Your Computer](#).

Table 2 Internal Tape Drive Default Settings

Parameter	Default Setting	Jumper Pins/ Switches
SCSI ID	6	Jumper pins 1-2, 3-4, 5-6, 7-8
Parity checking	Enabled	Jumper pins 9-10
Terminator power	Disabled	Jumper pins 11-12
Data compression	Enabled	Switches 1 and 2
MEdia Recognition System Checking (DDS-4 drives only)	Enabled	Switch 3
Power-On Self-Test diagnostic	Enabled	Switch 4
Host operating system	Microsoft Windows 98/Me/XP/NT/2000/2003 Server	Switches 5-8

Parameter	Default Setting	Jumper Pins/ Switches
SCSI interface compatibility (DDS-4 drives only)	Wide SCSI (LVD and single ended)	Switches 9
Vendor ID	SEAGATE DAT	Switch 10

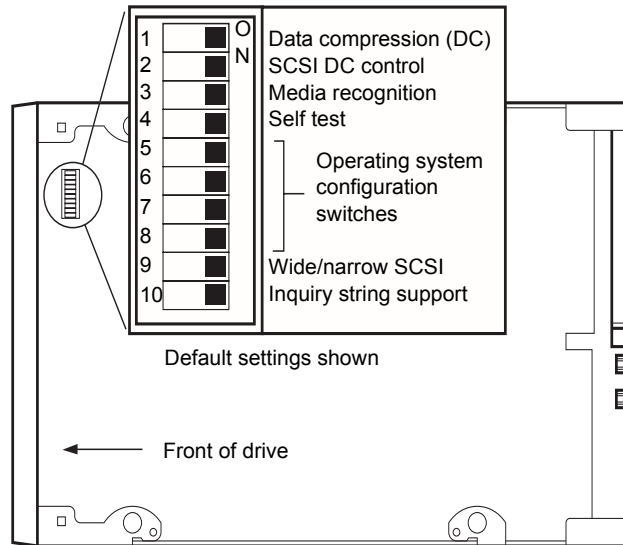
Figure 3 Internal Tape Drive Jumper Settings



SCSI ID=0	■ ■ ■ ■ ■ ■ ■ ■
SCSI ID=1	■ ■ ■ ■ ■ ■ ■ ■
SCSI ID=2	■ ■ ■ ■ ■ ■ ■ ■
SCSI ID=3	■ ■ ■ ■ ■ ■ ■ ■
SCSI ID=4	■ ■ ■ ■ ■ ■ ■ ■
SCSI ID=5	■ ■ ■ ■ ■ ■ ■ ■
SCSI ID=6	■ ■ ■ ■ ■ ■ ■ ■
SCSI ID=7	■ ■ ■ ■ ■ ■ ■ ■

SCSI ID=8	■ ■ ■ ■ ■ ■ ■ ■
SCSI ID=9	■ ■ ■ ■ ■ ■ ■ ■
SCSI ID=10	■ ■ ■ ■ ■ ■ ■ ■
SCSI ID=11	■ ■ ■ ■ ■ ■ ■ ■
SCSI ID=12	■ ■ ■ ■ ■ ■ ■ ■
SCSI ID=13	■ ■ ■ ■ ■ ■ ■ ■
SCSI ID=14	■ ■ ■ ■ ■ ■ ■ ■
SCSI ID=15	■ ■ ■ ■ ■ ■ ■ ■
Parity enable	■ ■ ■ ■ ■ ■ ■ ■
Term. power	■ ■ ■ ■ ■ ■ ■ ■

Figure 4 Internal Tape Drive Switch Settings



SCSI ID

Jumper Pins: 1-2, 3-4, 5-6, 7-8

Default Setting: SCSI ID 6

Each SCSI device on the bus must have its own unique ID. Your internal tape drive is shipped with a default SCSI ID of 6. If another SCSI device in the SCSI chain is already using this ID, use jumper pins 1-2, 3-4, 5-6, and 7-8 to change the drive's SCSI ID. Table 3 lists the SCSI IDs and their corresponding jumper settings.

Table 3 SCSI IDs and
 Corresponding
 Jumper Settings

Jumpers				
SCSI ID	1-2	3-4	5-6	7-8
0	Open	Open	Open	Open
1	Shunted	Open	Open	Open
2	Open	Shunted	Open	Open
3	Shunted	Shunted	Open	Open
4	Open	Open	Shunted	Open
5	Shunted	Open	Shunted	Open
6 (default)	Open	Shunted	Shunted	Open
7	Shunted	Shunted	Shunted	Open
8	Open	Open	Open	Shunted
9	Shunted	Open	Open	SHunted
10	Open	Shunted	Open	SHunted
11	Shunted	Shunted	Open	Shunted
12	Open	Open	Shunted	Open
13	Shunted	Open	Shunted	Shunted
14	Open	Shunted	Shunted	Shunted
15	Shunted	Shunted	Shunted	Shunted

Note: You can also change SCSI IDs by connecting a SCSI address-selection switch to pins 1 through 8.

If you change the drive's default SCSI ID, avoid using SCSI IDs 0 and 1 (which typically are assigned to a boot drive) and SCSI ID 7 (which typically is assigned to SCSI controllers or host bus adapters).

Parity Checking

Jumper Pins 9–10:

Pins 9-10 shunted: Enable parity checking (default)

Pins 9-10 open: Disable parity checking

By default, parity checking is enabled on the internal tape drive. To disable parity checking, remove the jumper from pins 9 and 10.

Note: If you disable parity checking, the drive still generates a parity bit.

Terminator Power

Jumper Pins 11–12:

Pins 11-12 shunted: Enable terminator power

Pins 11-12 open: Disable terminator power (default)

By default, terminator power is disabled on the internal tape drive. To enable terminator power, place a jumper across pins 11 and 12.

Note: If you enable terminator power, be careful not to short the TERMPWR signal to ground (for example, by attaching the SCSI cable upside down). If a short occurs, terminator power to the bus is interrupted. After the short is removed, a fuse in the drive is automatically reset, restoring terminator power.

Data Compression

Settings:

Switch 1 ON = Enable hardware data compression (default)

Switch 1 OFF = Disable hardware data compression

Switch 2 OFF = Recognize SCSI data compression commands (default)

Switch 2 ON = Ignore SCSI data compression commands

The internal tape drive provides two switches for controlling data compression.

Switch 1 determines whether hardware data compression is enabled or disabled. By default, switch 1 is set to ON, enabling hardware data compression. To disable hardware data compression, set switch 1 to the OFF position.

Switch 2 controls whether SCSI commands are recognized for enabling or disabling hardware data compression. By default, switch 2 is set to ON, allowing SCSI commands to be used to enable or disable hardware data compression. To prevent SCSI commands from enabling or disabling hardware data compression, set switch 2 to the OFF position.

When data compression is enabled, the drive compresses all data written to tape and decompresses all compressed data read from tape. The degree of compression varies due to the type of data being processed.

- Data with a high degree of redundancy, such as structured database files or graphics files, are compressed most efficiently, often at a ratio of 2:1 or more.
- Data with little redundancy, such as executable programs, are compressed the least.

Media Recognition System (DDS-4 Drives Only)

Settings:

Switch 3 ON = Enable MRS (default)

Switch 3 OFF = Disable MRS

Using non-DDS media may appear to give satisfactory results, but the inferior specifications of such media can cause data-integrity problems. To avoid these problems, the internal tape drive provides a media-recognition system (MRS) feature that determines whether tape cartridges conform to the DDS tape standard.

By default, switch 3 is set to ON, enabling MRS. With this setting, the drive:

- Reads from and writes to MRS media.
- Reads from but does not write to non-MRS media.

To disable MRS, set switch 3 to the OFF position. With this setting, the drive reads from and writes to MRS and non-MRS media.

Note: Switch 3 is reserved on internal DAT 72 drives.

Power-On Self-Test

Settings:

Switch 4 ON = Drive performs Power-On Self-Test (default)

Switch 4 OFF = Drive does not perform Power-On Self-Test

Switch 4 enables or disables the Power-On Self-Test diagnostics that the drive performs when powered on. By default, the drive responds to SCSI commands only after it successfully completes the Power-On Self-Test (about 5 seconds). To prevent the drive from performing the Power-On Self-Test when powered-up, set switch 4 to the OFF position.

Host Operating System

Switches: 5, 6, 7, 8

Default Setting: Microsoft Windows 98/Me/XP/NT/2000/2003 Server

Switches 5 through 8 configure the internal tape drive for a host operating system. By default, these switches are all ON. This setting configures the drive for a Microsoft Windows 98/Me/XP/NT/2000/2003 Server operating system.

To use the internal tape drive with a different operating system:

- Set switches 5 through 8 to select the appropriate settings.
- Refer to the operating system drive configuration supplement for information on scripts and other settings for various non-Windows operating systems. This supplement is available on your Tape Resource CD and at www.quantum.com/support.

Table 4 Host Operating Systems and Corresponding Switch Settings

Switches					
Host Operating System	SW5	SW6	SW7	SW8	SW10
Windows NT 4.0 with native backup applet using Quantum's STDAT4.SYS driver (default).	On	On	On	On	On
Windows NT 4.0 with native backup applet using Microsoft's 4mmDAT.SYS driver.	On	On	On	On	Off
Novell 4.11 with native backup applet using the TAPEDAI driver or NWTAPE driver dated after 11/3/99.	Off	On	On	Off	On

Switches					
Host Operating System	SW5	SW6	SW7	SW8	SW10
Novell 4.11 with native backup using the NWTAPE driver dated after 11/3/99.	On	On	On	On	Off
Novell 5.x with native backup applet using the NWTAPE.CDM driver dated before 11/3/99.	Off	On	On	Off	Off
Novell 5.x with native backup applet using the NWTAPE.CDM driver dated after 11/3/99.	On	On	On	On	Off
DEC UNIX	Off	On	On	On	--
Sun UNIX	On	Off	On	On	--
SGI	On	On	On	On	--
HP-UX	On	On	Off	On	--
IBM AIX	On	Off	On	Off	--
Linux	On	On	On	On	--
SCO (ODT and Open Server) installation using the MAKDEV utility.	Off	On	On	Off	--
SCO UnixWare 7.x	On	On	On	On	--

SCSI Wide/Narrow Configuration (DDS-4 Drives Only)

Settings:

Switch 9 ON = SCSI Wide Operating Mode (default)

Switch 9 OFF = SCSI Narrow Operating Mode

Switch 9 enables SCSI Wide or Narrow operation. By default, switch 9 is set to ON, enabling SCSI Wide (16-bit) operation. To enable SCSI Narrow

(8-bit) operation, set switch 9 to the OFF position. This allows the DDS-4 drive to terminate the upper byte of the SCSI bus.

Note: Narrow SCSI is not recommended.
Switch 9 is reserved on internal DAT 72 drives.

Vendor ID

Settings:

Switch 10 ON = Vendor ID is “SEAGATE DAT” (default)

Switch 10 OFF = Vendor ID is “ARCHIVE Python”

Switch 10 determines the vendor ID that the internal tape drive returns when it receives a SCSI “Inquiry” command. By default, the drive returns the vendor ID **SEAGATE DAT**.

Setting switch 10 to the OFF position configures the drive to return the vendor ID **ARCHIVE Python**. Independent software vendors can use this vendor ID to provide software compatibility with previous Quantum DDS tape drives.

Recording Drive Information

After you review and, if necessary, change the drive’s default settings, record the drive information. That way, you can reference this information in the future, without having to gain access to the drive inside your computer.

Accessing the Inside of Your Computer

To gain access to the inside of your computer:

- 1 Shut down the computer as you would normally. Then turn off the computer and all peripherals connected to it.

- 2 Remove the computer's power cord from the computer's AC connector.
- 3 Remove the computer cover to gain access to the inside of the computer. The documentation that came with your computer should explain this procedure.

Note: If you have to disconnect cables to gain access to the mounting bay, note which cables were removed. You can then refer to this information when you reconnect the cables at the end of this procedure.

- 4 Select an available 3.5-inch or 5.25-inch mounting bay, depending on the internal tape drive you want to install.

Note: The internal tape drive can be mounted horizontally or vertically (on its side).

- 5 If the mounting bay has a "filler panel," remove it according to the instructions in your computer's documentation. Place the screws aside. You will need them to secure the drive in the bay.
- 6 If the computer does not have a SCSI host adapter, you will need to purchase and install a SCSI host adapter.

Mounting the Internal Tape Drive

An internal tape drive without mounting brackets can be installed into a 3.5-inch drive bay. An internal tape drive with mounting brackets can be installed into a 5.25-inch drive bay.

- To mount the internal tape drive into a 3.5-inch bay, see [Mounting the Drive into a 3.5-inch Drive Bay](#).
- To mount the internal tape drive into a 5.25-inch bay, see [Mounting the Drive into a 5.25-inch Drive Bay](#).

Mounting the Drive into a 3.5-inch Drive Bay

The following procedure describes how to mount the drive in a 3.5-inch drive bay. This procedure assumes your drive is not equipped with side-mounting brackets.

- 1 Orient the drive so the front of the drive faces the front of the computer.
- 2 Insert the drive into the computer's drive bay.
- 3 Align the drive's front panel with the front panel of the computer.
- 4 Secure the drive in the mounting bay using two M3.0 metric screws on each side of the drive (see [figure 5](#)). [Figure 6](#) shows, the 3.5-inch drive has four screw holes on the bottom and five on each side.

Warning: Do not use screws longer than 4 mm; otherwise, you may damage the drive.

- 5 Proceed to [Connecting a SCSI Cable](#).

Figure 5 Mounting an Internal Tape Drive

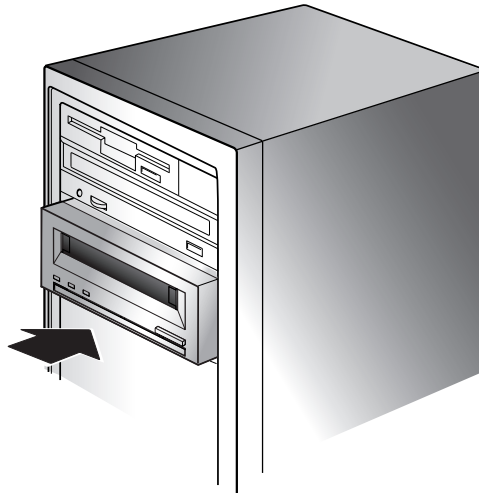
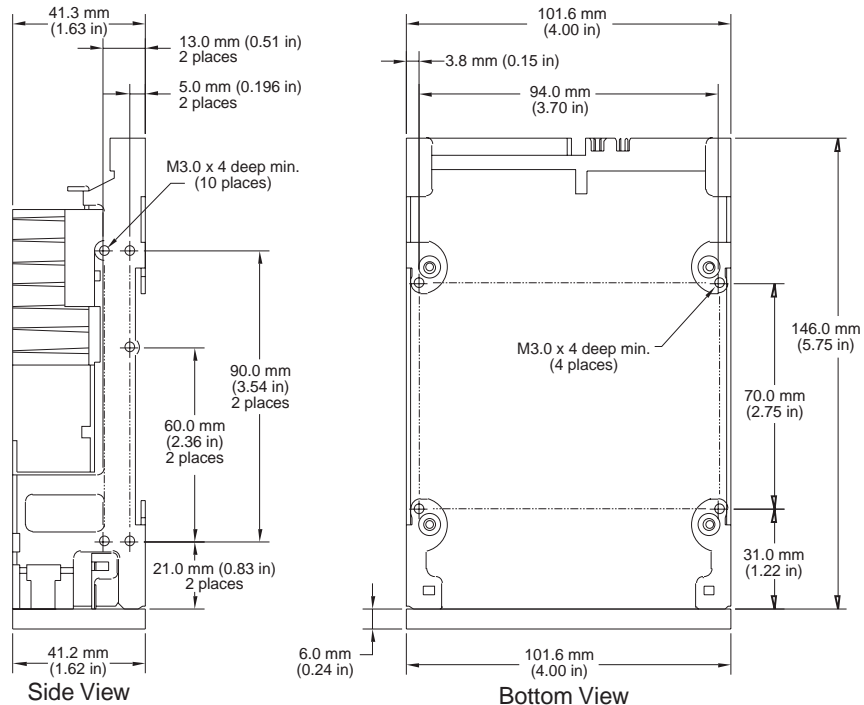


Figure 6 Mounting Holes for the Internal Tape Drive in a 3.5-inch Installation



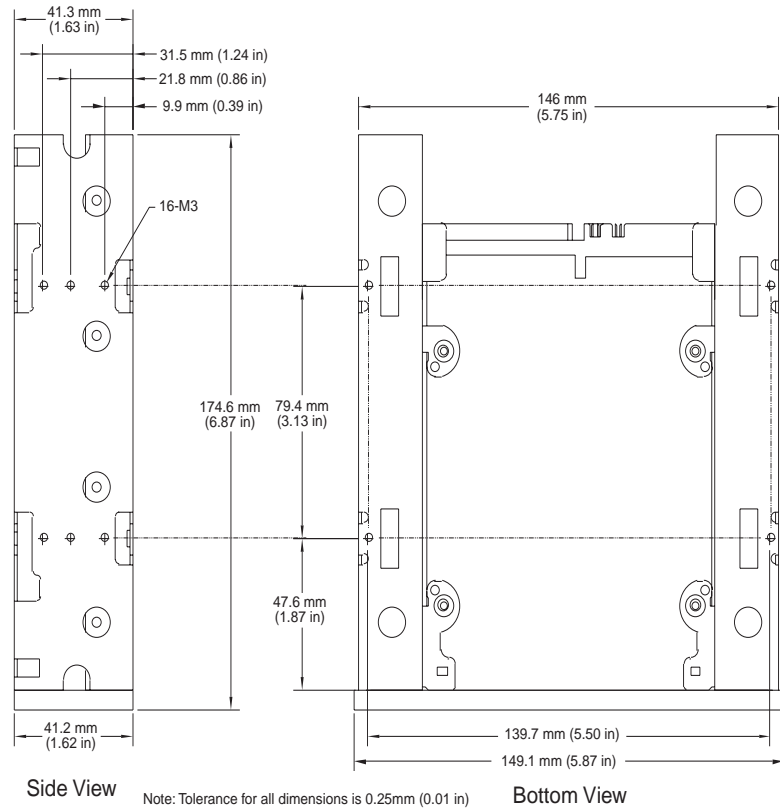
Note: Tolerance for all dimensions is 0.25mm (0.01 in)

Mounting the Drive into a 5.25-inch Drive Bay

The following procedure describes how to mount the drive in a 5.25-inch drive bay. This procedure assumes your drive has mounting brackets on the sides.

- 1 Orient the drive so the front of the drive faces the front of the computer.
- 2 Insert the drive into the computer's drive bay.
- 3 Align the drive's front panel with the front panel of the computer.
- 4 Secure the drive in the mounting bay using four screws on the bottom and six screws on the top of the drive (see [figure 7](#)).
- 5 Proceed to [Connecting a SCSI Cable](#).

Figure 7 Mounting Holes for the Internal Tape Drive in a 5.25-inch Installation



Connecting a SCSI Cable

The internal tape drives can be used with two SCSI interfaces:

- Wide SCSI – either Low Voltage Differential (LVD) or Single-ended (16-bit Wide mode),
- Narrow SCSI – either Low Voltage Differential (LVD) or Single-ended (8-bit Wide mode).

The tape drive automatically detects whether the SCSI bus is LVD or single ended. Be sure the SCSI bus is terminated properly.

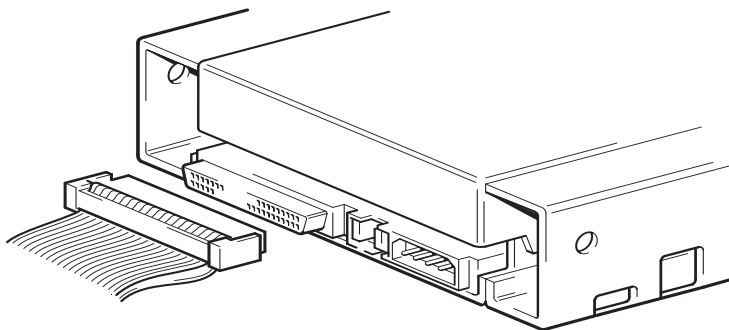
Note: We strongly recommend that you attach the tape drive to SCSI controllers that support the SCSI Ultra2 LVD interface only. Attaching the tape drive to a non-LVD SCSI controller or an 8-bit Narrow SCSI controller will degrade the performance of your tape drive and backup operations. Performance will also be degraded if you attach non-LVD SCSI devices on the same bus cable as your LVD connection. Do not connect the tape drive to a disk RAID controller (disk RAID controllers are not supported). If you install an adapter, we recommend you purchase a SCSI LVD controller kit that includes the SCSI cable and terminator.

Connecting to a Wide SCSI Connector

If your computer has a 68-pin wide SCSI connector:

- 1 Attach the interface cable from the SCSI host adapter to the 68-pin SCSI interface connector on the back of the internal tape drive.

Figure 8 SCSI Interface Connector on the Internal Tape Drive



Connecting to a Narrow SCSI Connector

The internal tape drives have an Ultra Wide SCSI interface. Obtaining a 50-to-68 pin adapter lets you connect the 68 pins on the internal tape drive to the 50 pins on the computer's narrow SCSI bus.

- 1 Connect the adapter to your computer's 50-pin SCSI connector.

- 2 Connect the SCSI cable with the adapter to the internal tape drive's 68-pin SCSI connector.

Note: Be sure the upper 8 data bytes of the 68-pin cable are properly terminated.

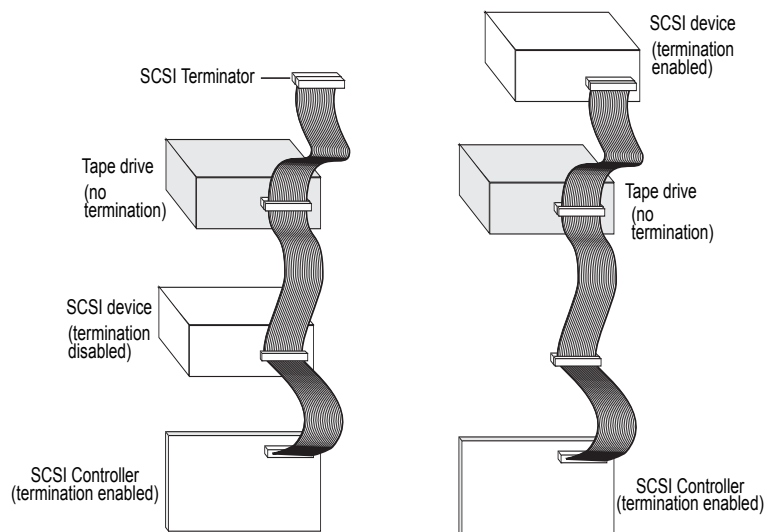
Checking SCSI Termination

The internal tape drives do not provide SCSI termination. For this reason, they should not be the last device on a SCSI chain. [Figure 9](#) shows two examples of terminating the internal tape drives.

If the drive is the only SCSI device on the bus:

- 1 Attach it to the next-to-last connector on the SCSI chain.
- 2 Attach a multi-mode terminator to the last connector in the chain. This terminator typically is a small, rectangular plastic block that is marked SCSI Terminator and attaches to the cable.

Figure 9 Two SCSI Termination Examples for the Internal Tape Drives



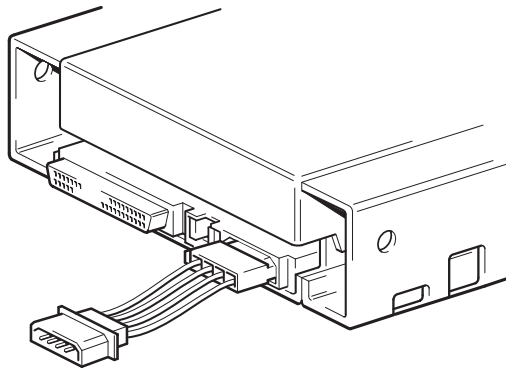
Connecting a Power Cable

To connect a power cable to the internal tape drive:

- 1 Connect a spare 4-pin power cable from the computer's internal power supply to the power connector on the back of the internal tape drive. [Figure 10](#) shows the location of the power connector on the internal tape drive.

The recommended 4-pin power connector for the internal drives is an AMP 1-48024-0 housing, with AMP 60617-1 pins or equivalent.

Figure 10 Power Connector on the Internal Tape Drive



Completing Your Installation

To complete and test your internal tape drive installation:

- 1 Use the screws you removed earlier to secure the drive in place.
- 2 Replace the computer cover.
- 3 Reconnect the power cord to the computer's power connector.
- 4 Turn on the computer. If the internal tape drive is configured to perform its Power-On Self-Test (see [Power-On Self-Test](#) on page 18), it performs the test for about five seconds. When the drive passes the test, all three front-panel LEDs should be **OFF**.

- 5 Install your backup software program. The documentation that came with your software should describe this procedure.
- 6 Gently insert a tape cartridge into the internal tape drive's slot (see [Loading a Cartridge](#) on page 43). Slide the cartridge into the slot until the drive accepts the cartridge and loads it. A brief delay occurs while the drive identifies the cartridge type and state, and moves the tape to the data area. Then the green **Media** LED goes **ON**.
- 7 Use your backup software application to perform a sample backup-and-verify operation. The amber **Drive** LED goes **ON** as data is written to and/or read from the tape.
- 8 At the end of the operation, press the Eject button on the front of the internal tape drive to eject the cartridge from the drive (see [Unloading a Cartridge](#) on page 44).

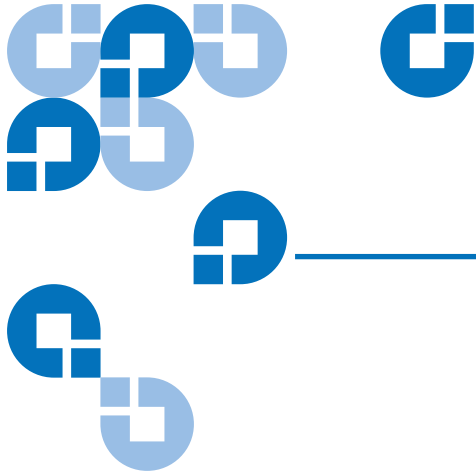
If you encountered any problems during this procedure, see [chapter 6, Troubleshooting](#).

Registering Your Tape Drive

After you install the internal tape drive, be sure to register it. Registering your drive ensures that you will receive the latest information about your drive, as well as other product, service, and support information. For your convenience, you can register your drive either through our Web site or by fax.

- If you have an Internet connection, please visit www.quantum.com/register to register your product.
- If you do not have an Internet connection, complete the Registration Card included with your package and either mail or fax it to the address or fax number on the Card.

Chapter 2 Installing Internal Tape Drives
Registering Your Tape Drive



Chapter 3

Installing External Tape Drives

This chapter describes how to install external DDS-4 and DAT 72 drives. Topics in this chapter are:

- [Unpacking](#)
- [Installation](#)
- [Reviewing Drive Default Settings](#)
- [SCSI ID](#)
- [Parity Checking](#)
- [Data Compression](#)
- [Media Recognition System \(DDS-4 Drives Only\)](#)
- [Power-On Self-Test](#)
- [Host Operating System](#)
- [Connecting a SCSI Cable](#)
- [Checking SCSI Termination](#)
- [Connecting a Power Cable](#)
- [Completing Your Installation](#)
- [Registering Your Tape Drive](#)

Note: For an internal drive, see [chapter 2](#) for installation instructions.

Unpacking

Before you unpack the contents of your drive package, inspect the shipping containers for damage. If you spot damage to the container, notify your carrier immediately.

When you unpack the package, compare the items received with those on the packing list. If any item is missing or damaged, please contact your place of purchase immediately.

What Else You Need

In addition to the contents included with your external tape drive, you need the following items to install your external tape drive.

- A SCSI host bus adapter that is properly installed and configured in a host computer
- A 50-to-68 pin adapter, if your computer has a narrow SCSI interface connector.
- Backup application software that supports the external tape drive. For a list of the latest backup software applications tested with the external DDS-4 and DAT 72 tape drives, please visit our Web site at <http://www.quantum.com>.

Installation

The following summarizes the installation procedure for your external tape drive.

- 1 [Reviewing Drive Default Settings](#)
- 2 [Recording Drive Information](#)
- 3 [Connecting a SCSI Cable](#)
- 4 [Checking SCSI Termination](#)

- 5 [Connecting a Power Cable](#)
- 6 [Completing Your Installation](#)

Reviewing Drive Default Settings

Your external tape drive comes with various default settings. You may need to change these settings to suit your requirements. Review the default settings in [table 5](#) to determine whether they suit your requirements or need to be changed.

Note: These settings can be changed by accessing the switches located on the bottom of the drive. Turn the drive over and gently pull the tab on the access door to release it. Once the door is open, the switches will be accessible. See [table 4](#) on page 19 for details about the switch settings.

- If you do not need to change these default settings, skip to [Connecting a SCSI Cable](#).

Table 5 External Tape Drive Default Settings

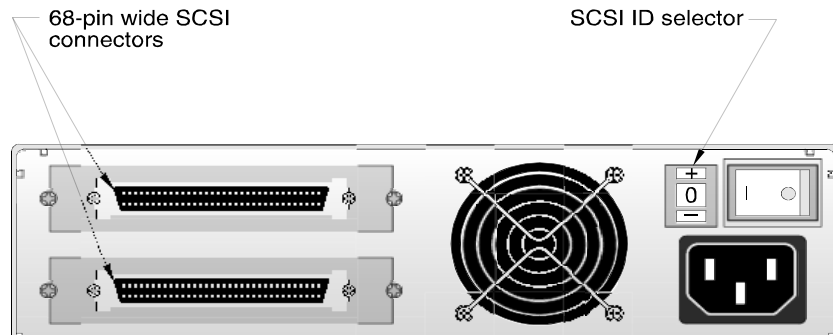
Parameter	Default Setting
SCSI ID	6
Parity checking	Enabled
Terminator power	Supplied to the SCSI bus
Data compression	Enabled
Media Recognition System Checking (DDS-4 drives only)	Enabled
Power-On Self-Test diagnostic	Enabled
Host operating system	Microsoft Windows 98/Me/XP/NT/2000/2003 Server

SCSI ID

Each SCSI device on the bus must have its own unique ID. Your external tape drive is shipped with a default SCSI ID of 6. If another SCSI device in the SCSI chain is already using this ID, use the SCSI ID Selector switch on the back of the drive to change the drive's SCSI ID.

Note: If you change the drive's default SCSI ID, avoid using SCSI IDs 0 and 1 (which typically are assigned to a boot drive) and SCSI ID 7 (which typically is assigned to SCSI controllers or host bus adapters). If you change the default SCSI ID, turn the drive power off and back on.

Figure 11 Back Panel of the External Tape Drive



Parity Checking

By default, parity checking is enabled on the external tape drive. If you disable parity checking, the drive still generates a parity bit.

Data Compression

By default, data compression is enabled. With this setting, the external tape drive compresses all data written to tape and decompresses all compressed data read from tape. The degree of compression varies due to the type of data being processed.

- Data with a high degree of redundancy, such as structured database files or graphics files, are compressed most efficiently, often at a ratio of 2:1 or more.
- Data with little redundancy, such as executable programs, are compressed the least.

Media Recognition System (DDS-4 Drives Only)

Using non-DDS media may appear to give satisfactory results, but the inferior specifications of such media can cause data-integrity problems. To avoid these problems, the external tape drive provides a media-recognition system (MRS) feature that determines whether tape cartridges conform to the DDS tape standard.

By default, MRS is enabled. With this setting, the drive:

- Reads from and writes to MRS media.
- Reads from but does not write to non-MRS media.

If you disable MRS, the drive reads from and writes to MRS and non-MRS media.

Note: MRS is not available with external DAT 72 drives.

Power-On Self-Test

By default, the external tape drive responds to SCSI commands only after it successfully completes the Power-On Self-Test (about 5 seconds). If you do not want the drive to perform this diagnostic when it powers-up, disable the Power-On Self-Test.

Host Operating System

By default, the external tape drive is configured for a Microsoft Windows 98/Me/XP/NT/2000/2003 Server operating system.

Recording Drive Information

After you review and, if necessary, change the drive's default settings, record the information.

Connecting a SCSI Cable

The external tape drives provide two 68-pin, shielded connectors on the back panel (see [figure 11](#)). You can use either connector to attach the drive to the host computer or to another SCSI device.

The internal tape drives can be used with two SCSI interfaces:

- Wide SCSI – either Low Voltage Differential (LVD) or Single-ended (16-bit Wide mode).
- Narrow SCSI – either Low Voltage Differential (LVD) or Single-ended (8-bit Wide mode).

The tape drive automatically detects whether the SCSI bus is LVD or single ended. Be sure the SCSI bus is terminated properly.

Note: We strongly recommend that you attach the tape drive to SCSI controllers that support the SCSI Ultra2 LVD interface only. Attaching the tape drive to a non-LVD SCSI controller or an 8-bit Narrow SCSI controller will degrade the performance of your tape drive and backup operations. Performance will also be degraded if you attach non-LVD SCSI devices on the same bus cable as your LVD connection. Do not connect the tape drive to a disk RAID controller (disk RAID controllers are not supported). If you install an adapter, we recommend you purchase a SCSI LVD controller kit that includes the SCSI cable and terminator.

Connecting to a Wide SCSI Connector

If your computer has a 68-pin wide SCSI connector:

- 1 Turn off your computer.
- 2 Connect the SCSI cable from the SCSI host adapter or from another unterminated SCSI device to either of the two 68-pin SCSI connectors on the back of the external tape drive (see [figure 11](#)).
- 3 If desired, use the other SCSI connector on the back panel of the external tape drive to attach another SCSI device. If the external tape drive is the last or only device in the SCSI chain, terminate the SCSI chain (see [Checking SCSI Termination](#)).

Connecting to a Narrow SCSI Connector

The external tape drives have an Ultra Wide SCSI interface. Obtaining a 50-to-68 pin adapter lets you connect the 68 pins on the external tape drive to the 50 pins on the computer's narrow SCSI bus.

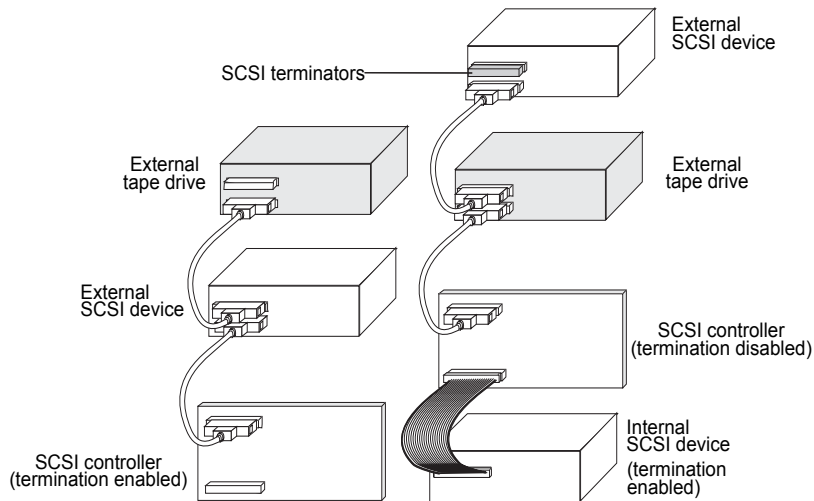
- 1 Turn off your computer.
- 2 Connect the adapter to your computer's 50-pin SCSI connector.
- 3 Connect the SCSI cable with the adapter to either of the two 68-pin SCSI connectors on the back of the external tape drive (see [figure 11](#)).
- 4 If desired, use the other SCSI connector on the back panel of the external tape drive to attach another SCSI device. If the external tape drive is the last or only device in the SCSI chain, terminate the SCSI chain (see [Checking SCSI Termination](#)).

<p>Note: Be sure the upper 8 data bytes of the 68-pin cable are properly terminated.</p>

Checking SCSI Termination

If the external tape drive is the last or only device in the SCSI chain, install a terminating plug on the unused SCSI connector on the drive's back panel. This terminator typically is a small, rectangular plastic block that is marked **SCSI Terminator**. [Figure 12](#) shows two examples of using SCSI termination.

Figure 12 Two SCSI Termination Examples for the External Tape Drives



Example 1: SCSI termination in a system that has only external SCSI devices.

Example 2: SCSI termination in a system that has both internal and external SCSI devices.

Connecting a Power Cable

To connect a power cable to the external tape drive:

- 1 Connect a power cable to the AC power connector on the back of the external tape drive (see [figure 11](#)).
- 2 Connect the other end of the power cable to a working AC outlet.

Note: Choose an AC outlet that is not controlled by a wall switch, which can turn off power to the AC outlet and to the external tape drive.

Completing Your Installation

To complete and test your external tape drive installation:

- 1 Reconnect the power cord to the computer's power connector.
- 2 Use the On/Off Switch on the back of the external tape drive to turn on the drive (see [figure 11](#)). The external tape drive performs its Power-On Self-Test for about five seconds. When the drive passes the test, all three front-panel LEDs should be OFF.
- 3 Turn on the computer.
- 4 Install your backup software program. The documentation that came with your software should describe this procedure.
- 5 Gently insert a tape cartridge into the external tape drive's slot. Slide the cartridge into the slot until the drive accepts the cartridge and loads it. A brief delay occurs while the drive identifies the cartridge type and state, and moves the tape to the data area. Then the green Media LED goes ON.
- 6 Use your backup software application to perform a sample backup-and-verify operation. The amber Drive LED goes ON as data is written to and/or read from the tape.
- 7 At the end of the operation, press the Eject button on the front of the external tape drive to eject the cartridge from the drive.

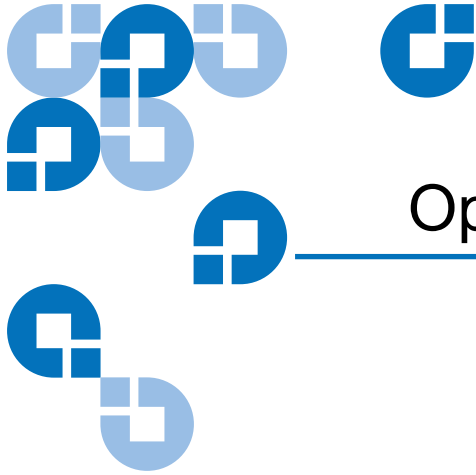
If you encountered any problems during this procedure, see Chapter 7 for troubleshooting procedures.

Registering Your Tape Drive

After you install the external tape drive, be sure to register it. Registering your drive ensures that you will receive the latest information about your drive, as well as other product, service, and support information. For your convenience, you can register your drive either through our Web site or by fax.

- If you have an Internet connection, please visit www.quantum.com to register your product.

- If you do not have an Internet connection, complete the Registration Card included with your package and either mail or fax it to the address or fax number on the card.



Operating Your Tape Drive

This chapter describes how to operate your tape drive.

Topics in this chapter are:

- [Using the Appropriate Media](#)
- [Handling Cartridges](#)
- [Loading a Cartridge](#)
- [Initializing a Blank Cartridge](#)
- [Unloading a Cartridge](#)
- [Write-Protecting a DDS Cartridge](#)
- [Cleaning the Tape Heads](#)

Using the Appropriate Media

The Quantum DDS-4 and DAT 72 drives use data-grade DDS cartridges, which comply with ANSI specifications listed in the “3.81 mm Helical-Scan Digital Computer Tape Cartridge for Information Interchange,” ANSI X3B5/89-156 standard.

For optimum performance and maximum storage capacity, use MRS tape cartridges that correspond to the format supported by your drive (see [table 6](#)). MRS cartridges have a series of alternate opaque and clear stripes at the beginning of the tape. These stripes classify the media as data-grade.

Table 6 Matching Drives with the Media They Support

Media	Tape Length	DDS-4 Drives	DAT 72 Drives
DDS-2	120 meters	x	
DDS-3	125 meters	x	x
DDS-4	150 meters	x	x
DDS 5th Generation	170 meters		x

Handling Cartridges

To protect your data cartridges and the information on them, observe the guidelines and avoid the pitfalls in [table 7](#).

Table 7 Cartridge Guidelines and Pitfalls

Guidelines to Follow...	Pitfalls to Avoid
Use DDS cartridges at temperatures from 5° C (40° F) to 40° C (113° F). Cartridges can be stored at temperatures down to -40° C (-40° F).	Do not expose cartridges to direct sunlight, moisture, excessively dry or humid places, extreme changes in temperature or humidity, or X-rays.
Handle cartridges gently.	Do not treat cartridges roughly or drop them.
Keep cartridges in plastic cases when they are not in use.	Do not try to clean the tape guides or tape path inside the cartridge.

Guidelines to Follow...	Pitfalls to Avoid
Apply just one label to the designated area on the cartridge. Affixing more labels can jam the drive.	Never touch the exposed tape media with your fingers.
If your data is important, consider reading data off of tapes and rewriting to new and perhaps more modern tapes every few years.	Never leave cartridges close to magnetic fields, such as near a monitor or telephone handset.
If cartridges are exposed to temperatures or humidities outside the specified operating environment, expose them to the operating environment for a time equal to the period that the cartridges were exposed to the out-of-specification environment (up to a maximum of 24 hours).	Do not read from or write to cartridges when a temperature change of 10° C per hour is occurring.

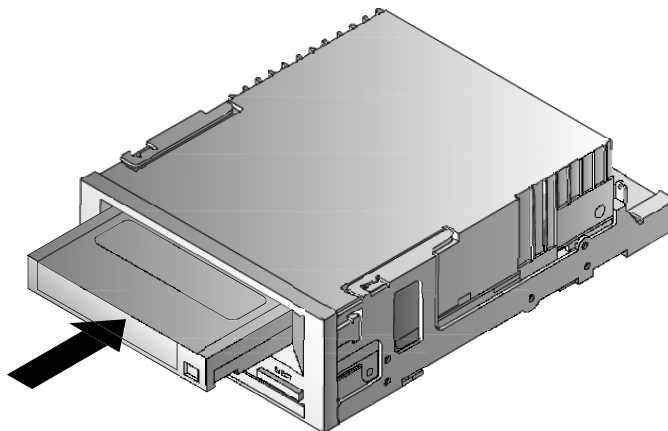
Loading a Cartridge

Quantum DDS drives have a front-loading cartridge bay for easy operation. To load a cartridge:

- 1 Hold the cartridge so the label is facing up and the exposed media is facing the drive.
- 2 Gently insert the cartridge into the drive (see [figure 13](#)). The drive-bay door opens automatically when a cartridge is inserted.

After you insert the cartridge, there is a brief delay while the drive identifies the cartridge type and state, and moves the tape to the data area. Then the Media LED turns ON.

Figure 13 Loading a Cartridge



Initializing a Blank Cartridge

When you insert a blank cartridge into the drive for the first time, the drive takes from 10 to 12 seconds to determine that the tape is blank. The drive automatically initializes the tape as soon as it receives a SCSI “Write” command from the host computer. Initializing a blank tape takes about 30 seconds.

Unloading a Cartridge

To unload a cartridge:

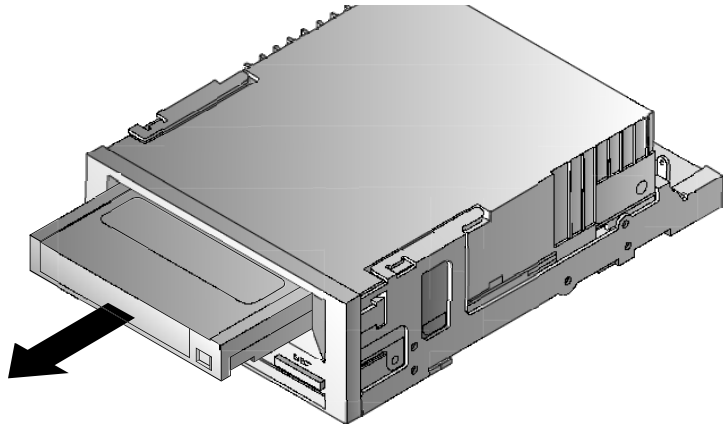
- 1 Be sure the Drive LED is OFF.

Caution: To ensure integrity of your backups and restores, do not press the Eject button when the Drive LED is ON.

- 2 Press the **Eject** button on the front panel of the drive to unload the cartridge (see [figure 14](#)). The drive automatically flushes the drive buffer to tape, rewinds the cartridge, updates the system log, and ejects the cartridge. This may take up to three minutes. Do not power-down the tape drive or host computer during this time.

Note: The backup software may issue a command to the drive that prevents the Eject button from ejecting the tape. If the tape does not eject, try ejecting it using your backup software commands.

Figure 14 Eject
Button on Front Panel
of Drive



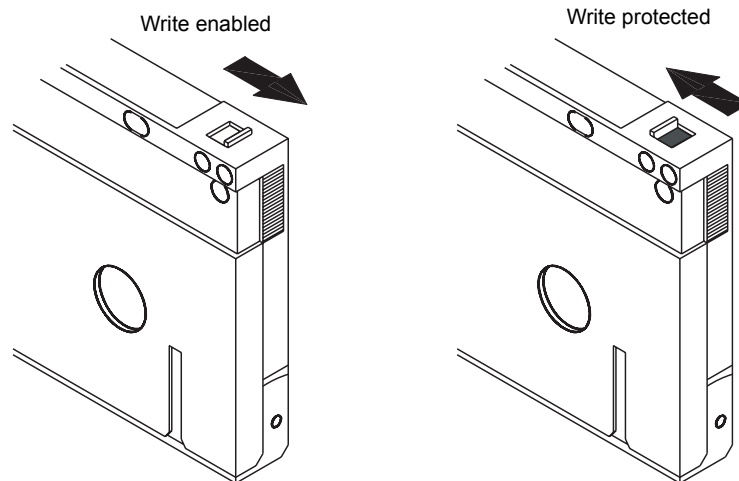
Write-Protecting a DDS Cartridge

Write-protecting a DDS cartridge protects the data on the cartridge from being changed, overwritten, or deleted. To write-protect a cartridge, slide the write-protect tab on the back of the cartridge to the open position (see

[figure 15](#)). To write-enable the cartridge, slide the write-protect tab so the hole is closed (see [figure 15](#)).

Caution: Write-protecting a cartridge does not protect the data on the cartridge from bulk-erasure or degaussing. Do not bulk erase DDS cartridges; otherwise, you will lose all of your data on the cartridge and your data will not be recoverable.

Figure 15 Write-protecting a DDS Cartridge



Cleaning the Tape Heads

If excessive dust or debris collects at the tape heads, your drive may not be able to read from or write to tape. To avoid this situation, clean the drive's tape heads:

- After every 50 hours of operation.
- If the **Clean** LED goes ON or flashes.
- If the **Media** LED flashes when the drive is operating.

To clean tape heads, use a Quantum-qualified DDS cleaning cartridge.

Note: Do not use an audio DAT cleaning cartridge, as the drive cannot recognize it. Also, avoid liquids, swabs, and other methods other than those recommended in this section.

To clean the tape heads:

- 1 Insert a Quantum-qualified DDS cleaning cartridge into the drive. The drive loads and runs the cleaning cartridge for about 30 seconds.

Note: If the cleaning cartridge runs for less than 30 seconds and the Clean LED is flashing, the cartridge has expired. Replace the cleaning cartridge with a new one and repeat step 1.

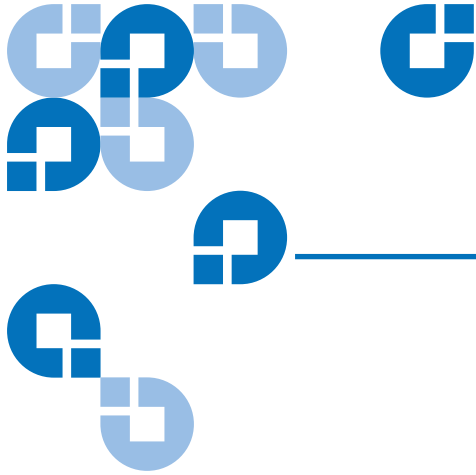
- 2 When the cleaning cartridge finishes cleaning the heads, the drive ejects the cartridge automatically.
- 3 Remove the cleaning cartridge from the drive and store the cartridge in a safe place.

Most cleaning cartridges are good for roughly 30 cleaning cycles. When the cleaning cartridge is used up, the Clean LED will flash rapidly and the cleaning cartridge should be replaced.

Observe the following guidelines when cleaning tape heads:

- Each time the cleaning cartridge is loaded, a new, unused portion of cleaning tape is advanced over the entire tape path. The drive does not rewind a cleaning cartridge. After about 30 cleaning cycles, the entire tape is used up and should be replaced. The Clean LED flashes when the cleaning cartridge needs to be replaced.
- The DDS-4 and DAT 72 drives have a TapeAlert feature that notifies your backup software application when the tape heads need to be cleaned or when a cleaning cartridge needs replacement.

Chapter 4 Operating Your Tape Drive
Cleaning the Tape Heads



Chapter 5

Understanding the Drive LEDs

This chapter describes the LEDs on the front panel of the DDS-4 and DAT 72 drives. These LEDs provide information about both normal and error conditions.

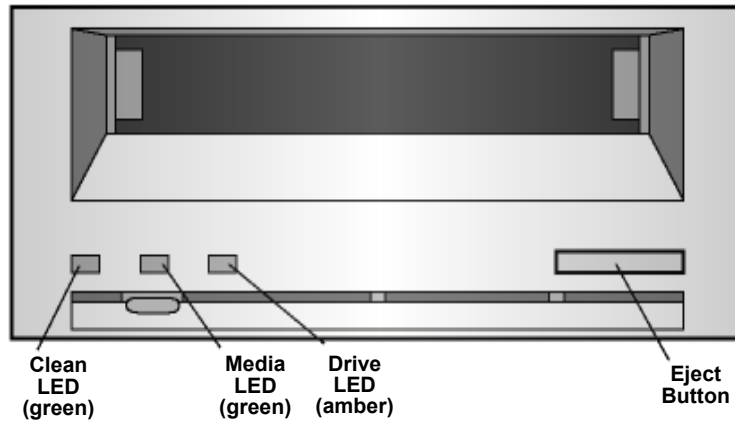
Topics in this chapter are:

- [Front Panel LEDs](#)
- [LED Summary](#)
- [Clean LED](#)
- [Media LED](#)
- [Drive LED](#)

Front Panel LEDs

[Figure 16](#) shows an example of the LEDs on the drive front panel of the DDS-4 and DAT 72 drives. The external tape drive has the same front-panel LEDs, plus a green **Power-On** LED.

Figure 16 Front Panel LEDs on Internal Drive



LED Summary

[Table 8](#) summarizes the actions of the front-panel LEDs.

Table 8 LED Quick Summary

LED	Color	Action	Description
Clean	Green	ON (Lit) Slow Flashing Flashing	Cleaning is required. Internal error rate threshold has been exceeded and cleaning is required. Cleaning cartridge in the drive has exceeded its useful life. Replace the old cleaning cartridge with a new one.

LED	Color	Action	Description
Media	Green	ON (Lit) Flashing	An inserted cartridge is operating properly. Drive could not write the tape correctly (write error). Use a DDS cleaning cartridge to clean the drive.
Drive	Amber	ON (Lit) Rapid Flashing	Drive is reading/writing normally. A hardware fault has occurred.

Clean LED

The Clean LED indicates whether a drive needs to be cleaned.

Table 9 Clean LED

LED Status	Description
ON Continuously	Drive requires cleaning. Use only an approved DDS cleaning cartridge.
Flashing slowly (approximately ON 2 seconds, OFF 1 second)	Tape cartridge in use has exceeded a predefined soft-error threshold. This signal is a warning only and does not indicate that data has been compromised. Remove the tape and clean the drive using an approved DDS cleaning cartridge. If the Clean LED still flashes after cleaning and reinserting the original data cartridge, use a new cartridge for future backups.
Flashing rapidly	A cleaning cartridge that has exceeded its useful life has been inserted into the drive. Replace the cleaning cartridge with a new approved DDS cleaning cartridge.

Media LED

The Media LED indicates whether a DDS cartridge is operating normally.

Table 10 Media LED

LED Status	Description
ON continuously	A DDS cartridge has been inserted and the drive is operating normally.
Flashing rapidly	Drive could not write the tape correctly (maximum rewrite count exceeded) and the write operation failed. Clean the drive heads using an approved DDS cleaning cartridge. If you reinsert the original data cartridge and the LED continues flashing, insert a new data cartridge and retry the operation

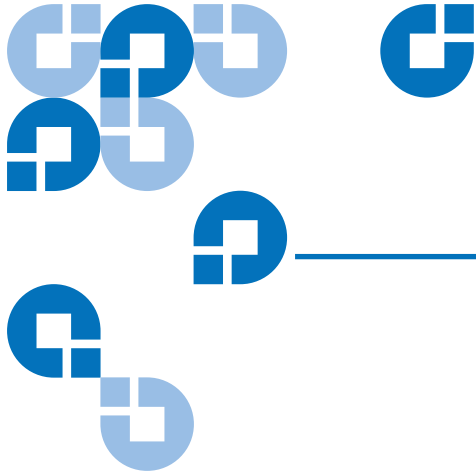
Drive LED

The amber Drive LED lets you know when data is being read from or written to tape. It also informs you when a hardware fault occurs.

Table 11 Drive LED

LED Status	Description
ON continuously	The drive is reading or writing the tape (SCSI or tape movement is present).
Flashing rapidly	<p>A hardware fault occurred. If the fault occurs immediately after powering on the drive, the Power-On Self-Test switch (switch 4) is enabled and a Power-On Self-Test has failed. If the front panel LEDs are flashing together, contact the Technical Support department.</p> <p>If the Drive LED is flashing rapidly during drive operation, press the Eject button to remove the tape. If the tape does not eject within 2 minutes, press and hold the Eject button for more than 5 seconds. The tape should eject within 40 seconds. Contact Technical Support for more information.</p>

Note: If your backup software issues a SCSI **Prevent Media Removal** command, the **Drive** LED remains **ON** and the **Eject** button is disabled, so that the tape cannot be ejected accidentally. To eject the tape, use your backup software's **Eject** command.



Chapter 6 Troubleshooting

This chapter provides suggestions for troubleshooting your drives in the unlikely event you encounter a problem with them.

Topics in this chapter are:

- [Missing or Damaged Parts](#)
- [SCSI ID Problems](#)
- [SCSI Termination Problems](#)
- [Mounting Hardware Problems](#)
- [Drive Does Not Work](#)
- [Power-On Self-Test Fails](#)
- [Computer Does Not Boot](#)
- [Computer Does Not Recognize Drive](#)
- [Backup Program Does Not Recognize Drive](#)
- [Write Error](#)
- [Hardware Error](#)

Missing or Damaged Parts

If any of the contents included with your DDS-4 or DAT 72 drive are missing or damaged, contact your place of purchase immediately.

SCSI ID Problems

Each SCSI device on the same SCSI bus must have a unique SCSI ID. The default SCSI ID for internal and external DDS-4 and DAT 72 drives is 6. You should leave this default SCSI ID unchanged unless another device on the SCSI bus is already using this ID.

If the default SCSI ID is already in use, you can change the default SCSI ID on the drive using either jumpers on the back of the internal tape drives or the SCSI ID Selector switch on the back of the external SCSI drives. After you set the SCSI ID, record your setting. For more information about SCSI IDs, see [SCSI ID](#) on page 15 if you have an internal tape drive or an external tape drive.

SCSI Termination Problems

If an external DDS-4 or DAT 72 drive is the last device or the only device in a SCSI chain, you must install a terminating plug on the unused SCSI connector. For more information, see [Checking SCSI Termination](#) on page 27.

The internal DDS-4 and DAT 72 drives do not provide SCSI termination. Therefore, do not install these drives as the last devices in the SCSI chain. If the drive is the only SCSI device, attach the drive to the connector which is next to last on the SCSI chain and attach a multi-mode terminator to the last connector in the chain. For more information, see [Checking SCSI Termination](#) on page 27.

Mounting Hardware Problems

The internal DDS-4 and DAT 72 drives are designed to install in most servers using the hardware accompanying the drives, without requiring additional items. However, if your server requires additional items to install the internal DDS-4 or DAT 72 drives, or if any original server components are damaged or lost, contact your server manufacturer or vendor.

Drive Does Not Work

If the green Power-On LED on the external tape drive does not go ON, or if the internal tape drive does not work:

- 1 Check the power connection to the drive.
- 2 If the connection is secure, replace the power cable with one that is known to work.
- 3 If the drive still does not work, contact the Technical Support department.

Power-On Self-Test Fails

If the drive fails its Power-On Self-Test:

- 1 Check for a cartridge in the drive. If you find one, eject it.
- 2 Power-down the drive and power it up again.
- 3 If the drive still fails its Power-On Self-Test, contact Technical Support.

Computer Does Not Boot

If the computer does not boot after you install the drive:

- 1** You may have forgotten to reattach the computer's power cable, which you removed when you installed the drive. Be sure all cables are connected properly to the computer.
- 2** Be sure the computer's power cable is connected to a power outlet that is known to work. Plug into the outlet another appliance, such as a lamp, that you know to work. If the appliance does not work, the problem is with the outlet.
- 3** The power outlet connected to the computer is controlled by a wall switch that is removing power from the outlet. Either switch outlets or set the wall switch so that power is applied to the outlet.
- 4** The computer has two SCSI host adapters installed whose resources are conflicting with each other. Remove the conflicting device or consult the documentation that came with the device for suggestions about resolving the problem.

Computer Does Not Recognize Drive

If your computer does not recognize the drive:

- 1** Verify that the SCSI and power cables to the drive are installed properly.
- 2** The drive may be using a SCSI ID assigned to another SCSI device on the SCSI bus. If so, reassign a unique SCSI ID to the drive or to the conflicting device.
- 3** Check that the SCSI bus is terminated properly. Note that the internal DDS-4 and DAT 72 drives do not provide SCSI termination and, therefore, should not be the last devices on a SCSI chain.

Backup Program Does Not Recognize Drive

If your backup application program does not recognize the drive:

- 1 Use the Windows Device Manager to determine whether the operating system has recognized the drive. If the tape drive is recognized properly, it appears under the **Tape Drive** category. If the tape drive was recognized, but native drivers are not installed, it appears under **Other Devices**. The backup software supplies the necessary drivers for the tape drive and native drivers are not required.
- 2 If the Device Manager shows the drive, check the documentation that came with your backup program to determine whether the program needs a particular driver to be installed.
- 3 If the Device Manager does not list the drive, the drive may not be installed or configured properly. Check your drive installation and configuration.

Write Error

If the **Media** LED is flashing, a write error has occurred.

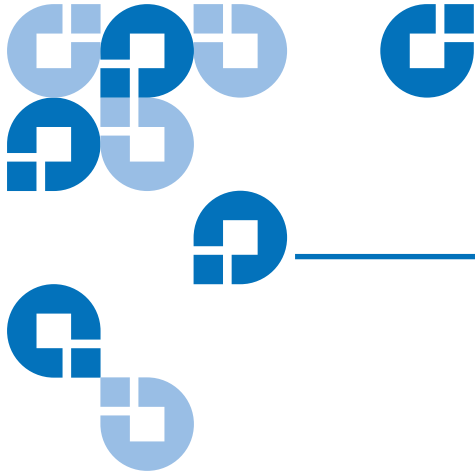
- 1 Use a Quantum-qualified DDS cleaning cartridge to clean the tape heads (see [Cleaning the Tape Heads](#) on page 46).
- 2 Try to run a short backup and verify.
- 3 If the **Media** LED continues to flash, contact the Technical Support department.

Hardware Error

If the **Drive** LED is flashing rapidly, a hardware error has occurred. If the fault occurs immediately after powering on the drive, the Power-On Self Test switch (switch 4) is enabled and a Power-On Self-Test has failed. If the front panel LEDs are flashing together, contact the Technical Support department.

If the **Drive** LED is flashing rapidly during drive operation:

- 1 Press the **Eject** button to remove the tape.
- 2 If the tape does not eject within 2 minutes, press and hold the **Eject** button for more than 5 seconds. The tape should eject within 40 seconds.
- 3 Contact Technical Support for more information.



Appendix A Loading Revised Firmware

Your DDS-4 or DAT 72 tape drive includes permanently installed, electrically upgradeable flash memory. This memory allows qualified OEMs to revise DAT 72 and DDS-4 SCSI firmware quickly and easily. It also prolongs the life of the tape drive by allowing the drive to inherit leading technologies as soon as those technologies become available.

This appendix describes how to load firmware onto your tape drive. Topics in this appendix are:

- [Firmware Upgrade Methods](#)
- [Using Firmware Cartridges](#)

Firmware Upgrade Methods

You can upgrade your tape drive's firmware two ways:

- Using the diagnostic software available at www.quantum.com/support. This software uploads a firmware file via SCSI from your host computer to the tape drive.
- Using Quantum OEM firmware cartridges

Using Firmware Cartridges

The following procedure describes how to upgrade the tape drive firmware using a firmware upgrade tape cartridge. Firmware upgrade cartridges are available only to qualified Quantum OEM customers. Contact your sales representative for information.

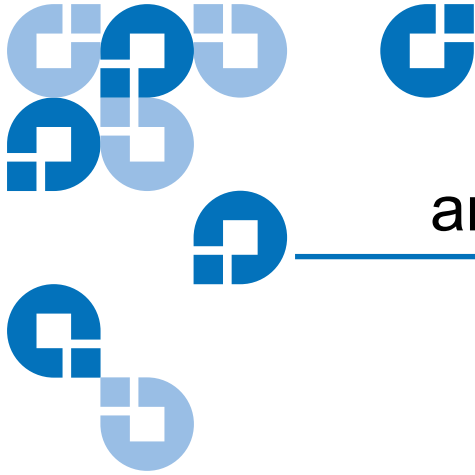
Note: The firmware can also be upgraded from a host computer via the SCSI connection using software available at www.quantum.com.

- 1 Power on the host system with the DDS-4 or DAT 72 drive installed.
- 2 Close all applications that might try to communicate with the drive during the firmware upgrade procedure.
- 3 Insert the firmware upgrade cartridge. The drive automatically recognizes the firmware upgrade cartridge and begins downloading the firmware from the cartridge into DRAM. When the firmware has been downloaded into DRAM, the drive ejects the firmware upgrade cartridge and the **Drive** LEDs blink in a progressive pattern. When the blinking pattern stops, the firmware upgrade operation is complete.

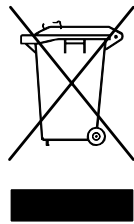
Warning: Once the firmware upgrade cartridge is inserted into the drive, no power interruption can occur while the firmware is loading. Do not power off the drive. If a power interruption occurs, the firmware may not be loaded correctly and the drive may not operate properly.

Do not power down the host system or disconnect power to the drive until the **Drive** LEDs stop flashing. Otherwise, the drive may be rendered inoperative.

- 4 It may be necessary to reboot the system to ensure that your backup software application continues to recognize the tape drive.

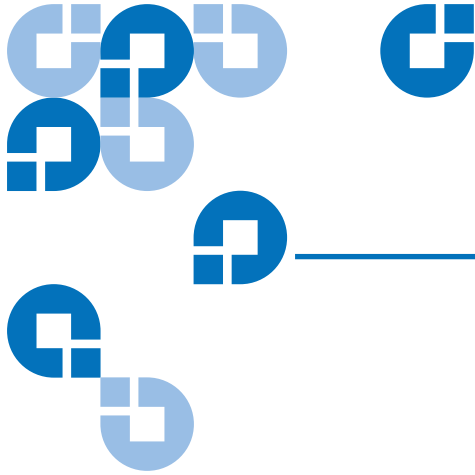


Disposal of Electrical and Electronic Equipment



This symbol on the product or on its packaging indicates that this product should not be disposed of with your other waste. Instead, it should be handed over to a designated collection point for the recycling of electrical and electronic equipment. The separate collection and recycling of your waste equipment at the time of disposal will help to conserve natural resources and ensure that it is recycled in a manner that protects

human health and the environment. For more information about where you can drop off your waste equipment for recycling, please visit our website at qcare.quantum.com or contact your local government authority, your household waste disposal service or the business from which you purchased the product.



Index

A

Accessing inside of your computer
internal drives 21
Appropriate cartridges 41, 46
Avoiding electrostatic damage 11

B

Backup program does not recognize
drive 59

C

Cables
Power (external drives) 38
Power (internal drives) 28
SCSI (internal drives) 25
Capacity 4
Cartridges 42

appropriate 41, 46
firmware 62
guidelines 42
initializing 44
loading 43
unloading 44
Clean LED 46, 51
Cleaning tape heads 46
Components on front panel 5
Computer does not
boot 58
recognize drive 58

D

Damage from static electricity 11
Damaged parts 56
DAT 2
DAT 72 31
capacity and transfer rates 4
LEDs 49

- Data compression
 - external drives 34
 - internal drives 17, 18, 20
- DDS-4 31, 35
 - capacity and transfer rates 4
 - LEDs 49
- Default settings
 - external drives 33
 - internal drives 13
- Disposal
 - electrical equipment 63
 - electronic equipment 63
- Drive does not work 57
- Drive LED 52, 60

E

- Eject button 45, 60
- Electrical equipment disposal 63
- Electronic equipment disposal 63
- Electrostatic damage 11
- External drives
 - connecting a power cable 38
 - connecting a SCSI cable 36
 - data compression 34
 - default settings 33
 - host operating system 35
 - installation summary 32
 - installing 31
 - Media Recognition System 35
 - parity checking 34
 - Power-On Self-Test 35
 - quick start 6
 - SCSI ID 34
 - SCSI termination 37
 - unpacking 32

F

- Firmware cartridges 62
- Firmware upgrade 61
- Front panel
 - LEDs 49
- Front panel components 5

H

- handling 42
- Hardware error 60
- Host operating system
 - external drives 35
 - internal drives 19

I

- Initializing a blank cartridge 44
- Installation summary
 - external drives 32
 - internal drives 12
- Installing
 - external drives 31
 - internal drives 9
- Internal drives
 - accessing inside of your computer 21
 - connecting a power cable 28
 - connecting a SCSI cable 25
 - connecting to a wide SCSI connector 26
 - data compression 17, 18, 20
 - default settings 13
 - host operating system 19

- installation summary 12
- installing 9
- jumper settings 14
- Media Recognition System 18
- mounting 22
- parity checking 17
- Power-On Self-Test 18
- quick start 5
- SCSI ID 16
- SCSI termination 27
- SCSI Wide/Narrow configuration
 - 20, 21
- switch settings 15
- terminator power 17
- tools 12
- unpacking 10
- vendor ID 21

J

- Jumper settings for internal drives 14

L

- LEDs 49
 - Clean 46, 51
 - Drive 52, 60
 - Media 52
 - Power-on 49, 57
 - summary 50
- Loading a cartridge 43

M

- Media LED 52
- Media Recognition System
 - external drives 35
 - internal drives 18
- Missing parts 56
- Mounting
 - hardware problems 57
 - internal drives 22

O

- Operation
 - cartridge guidelines 42
 - cleaning tape heads 46
 - handling cartridges 42
 - initializing a blank cartridge 44
 - loading a cartridge 43
 - unloading a cartridge 44
 - using appropriate media 41, 46

P

- Parity checking
 - external drives 34
 - internal drives 17
- Parts, missing or damaged 56
- Power cable connection
 - external drives 38
 - internal drives 28
- Power-On LED 49, 57
- Power-On Self-Test
 - external drives 35
 - fails 57

internal drives 18

Q

Quick start

external drives 6

internal drives 5

R

Registering tape drive 29, 39

S

SCSI cable connection

external drives 36

internal drives 25

wide SCSI 26

SCSI ID

external drives 34

internal drives 16

problems 56

SCSI II specification xiii

SCSI termination

external drives 37

internal drives 27

problems 56

SCSI Wide/Narrow configuration

internal drives 20, 21

Switch settings for internal drives 15

T

Tape cartridges

appropriate 41, 46

handling 42

initializing 44

loading 43

unloading 44

Tape drive

capacity 4

components 5

registering 29

transfer rates 4

Tape drives

registering 39

Tape heads, cleaning 46

TapeAlert feature 47

Terminating SCSI for external drives
37

Terminating SCSI for internal drives
27

Termination problems 56

Terminator power

internal drives 17

Tools

internal drives 12

Transfer rates 4

Troubleshooting

backup program does not
recognize drive 59

computer does not boot 58

computer does not recognize drive
58

Drive does not work 57

hardware error 60

missing or damaged parts 56

mounting hardware problems 57

Power-On Self-Test fails 57

SCSI ID problems 56
SCSI termination problems 56
write error 59

U

Unloading a cartridge 44
Unpacking
 external drives 32
 internal drives 10
Upgrading firmware 61

V

Vendor ID
 internal drives 21

W

Write error 59

